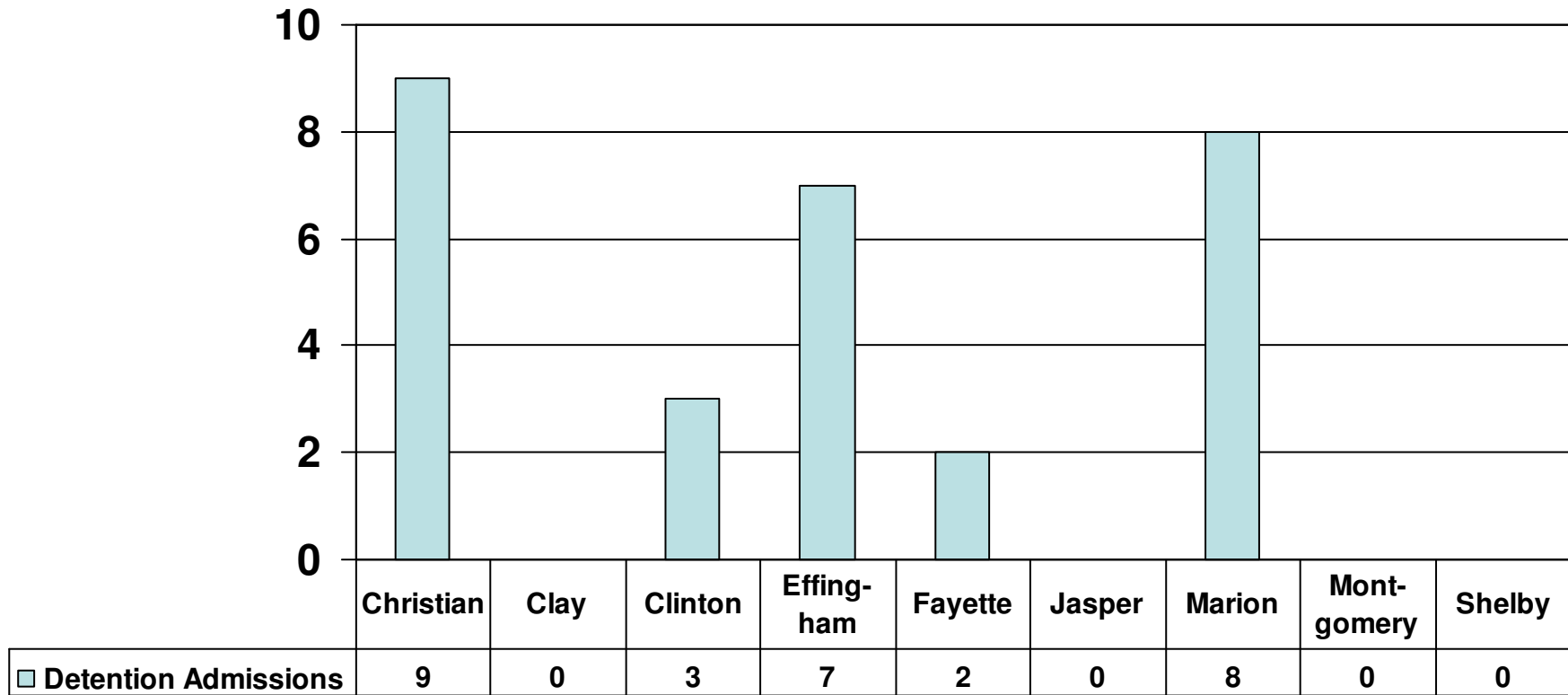


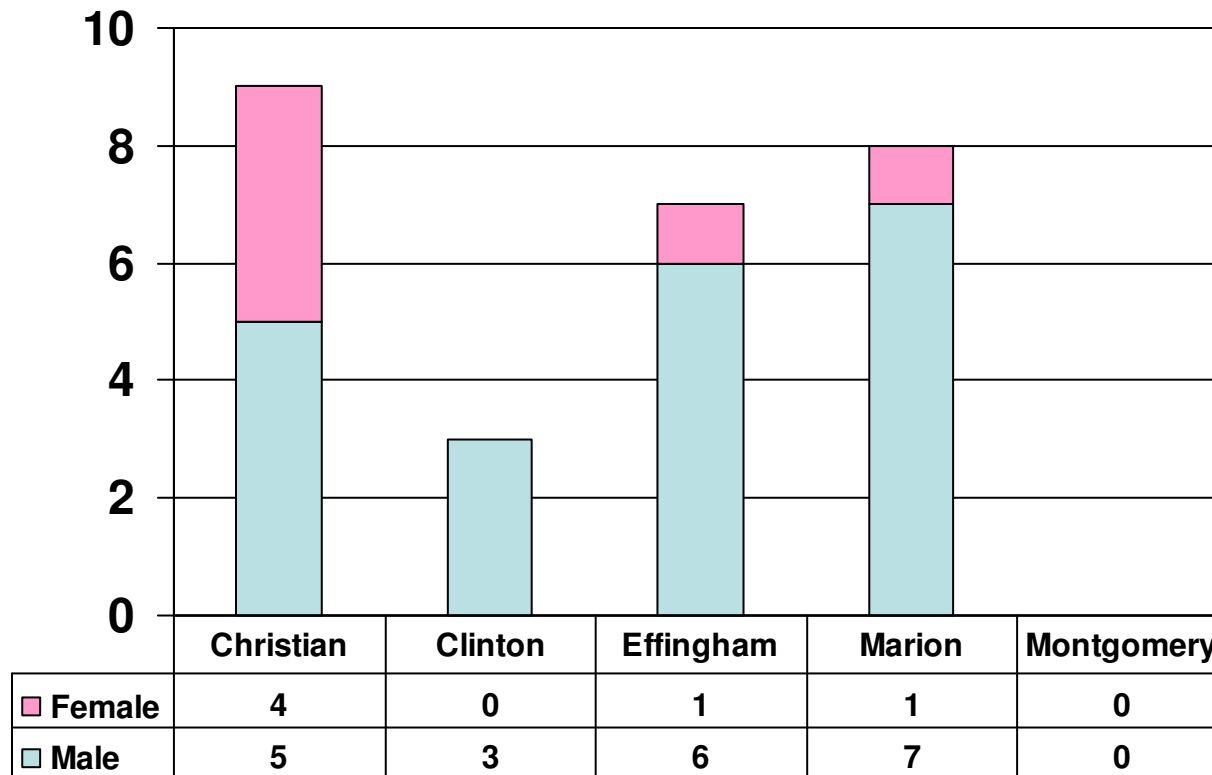
Fourth Judicial Circuit
Juvenile Detention and
Department of Juvenile Justice
Admissions

Data Report
First Quarter 2008

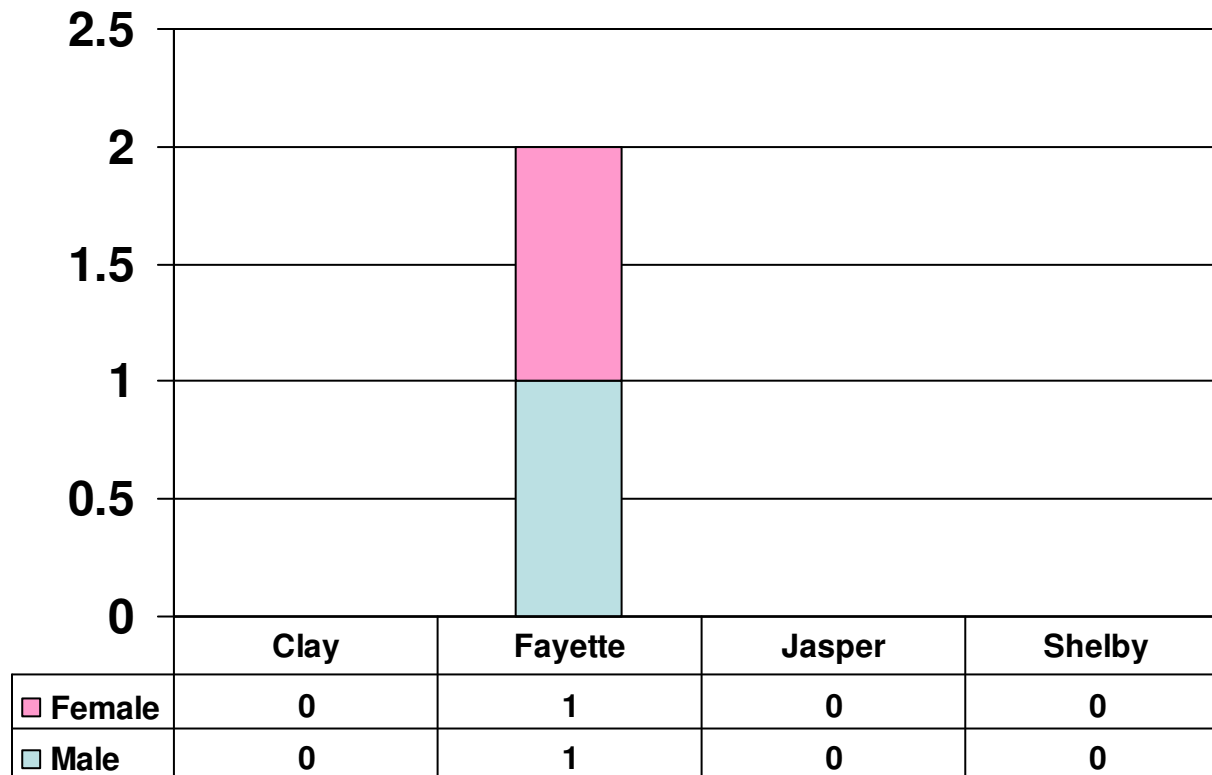
Detention Admissions by County First Quarter 2008



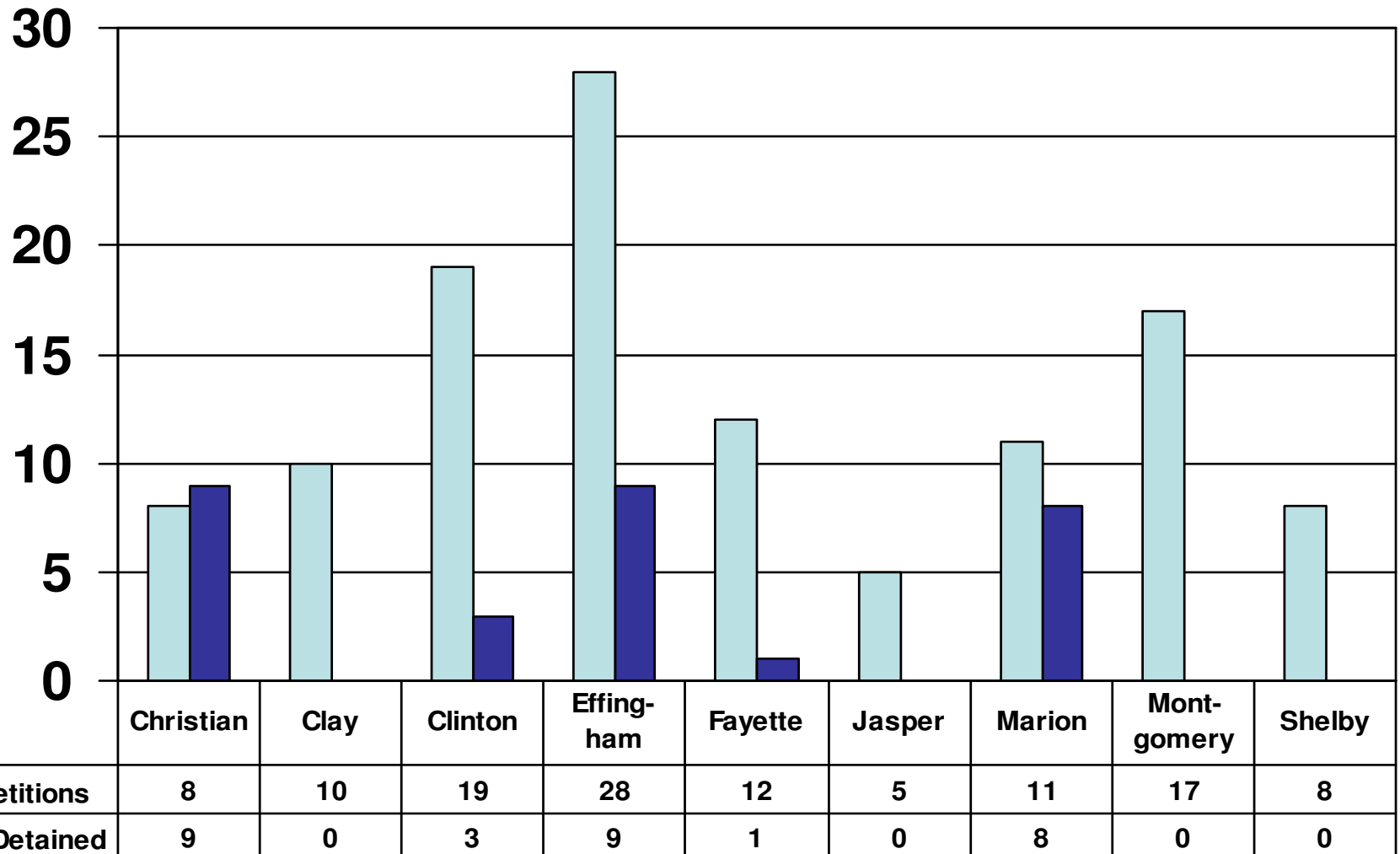
Detention Admissions by Gender (Population > 30,000) First Quarter 2008



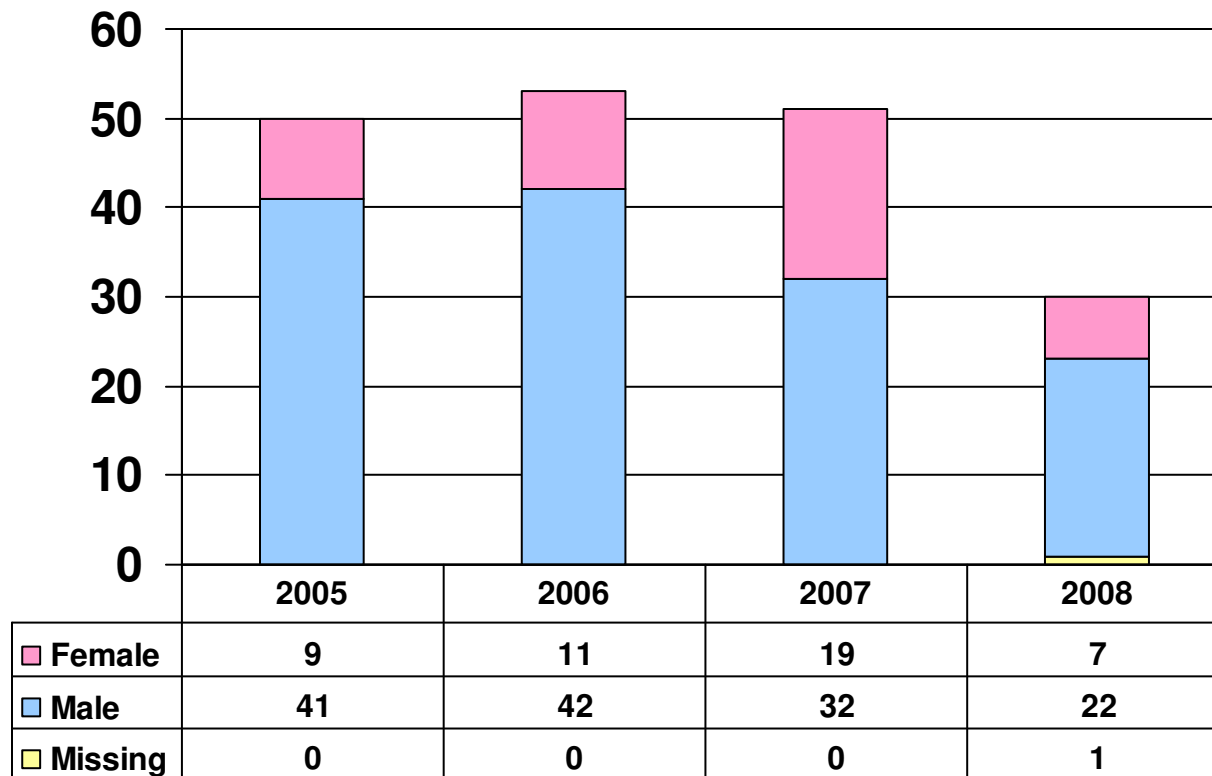
Detention Admissions by Gender (Population <30,000) First Quarter 2008



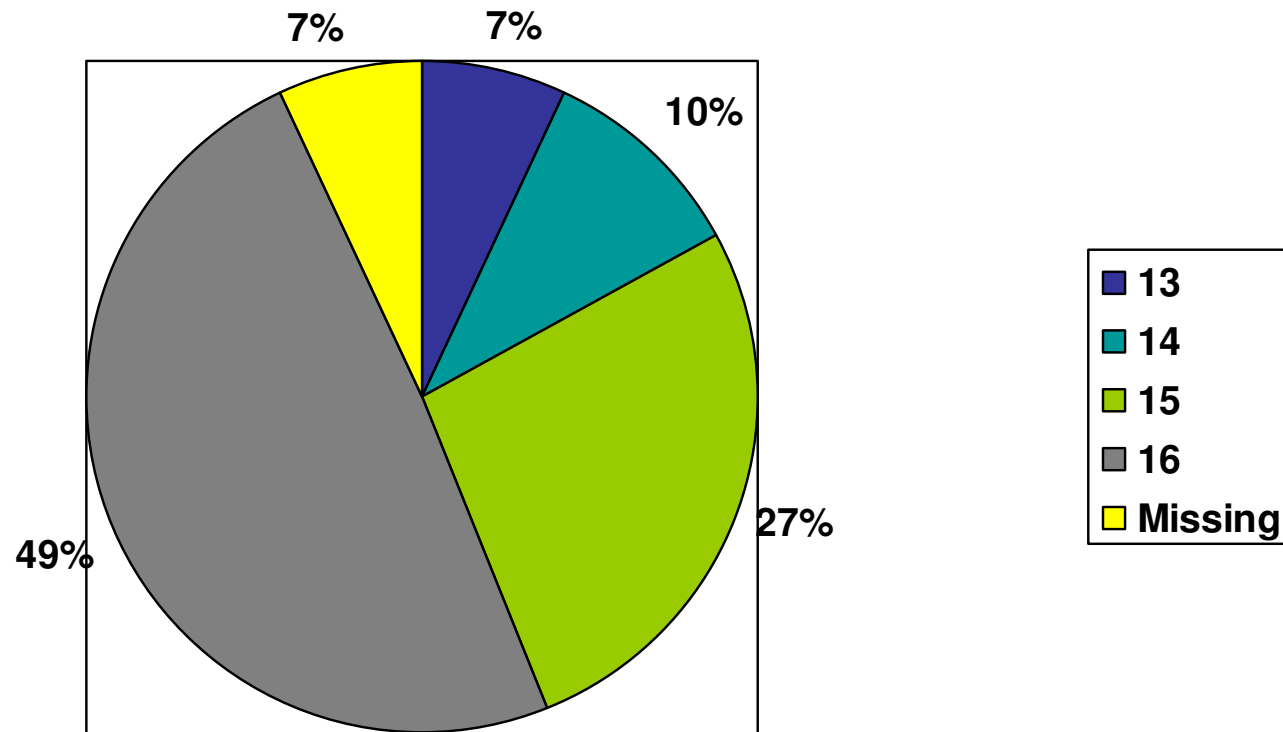
Number of Detention Admissions and Delinquency Petitions Filed by County First Quarter 2008



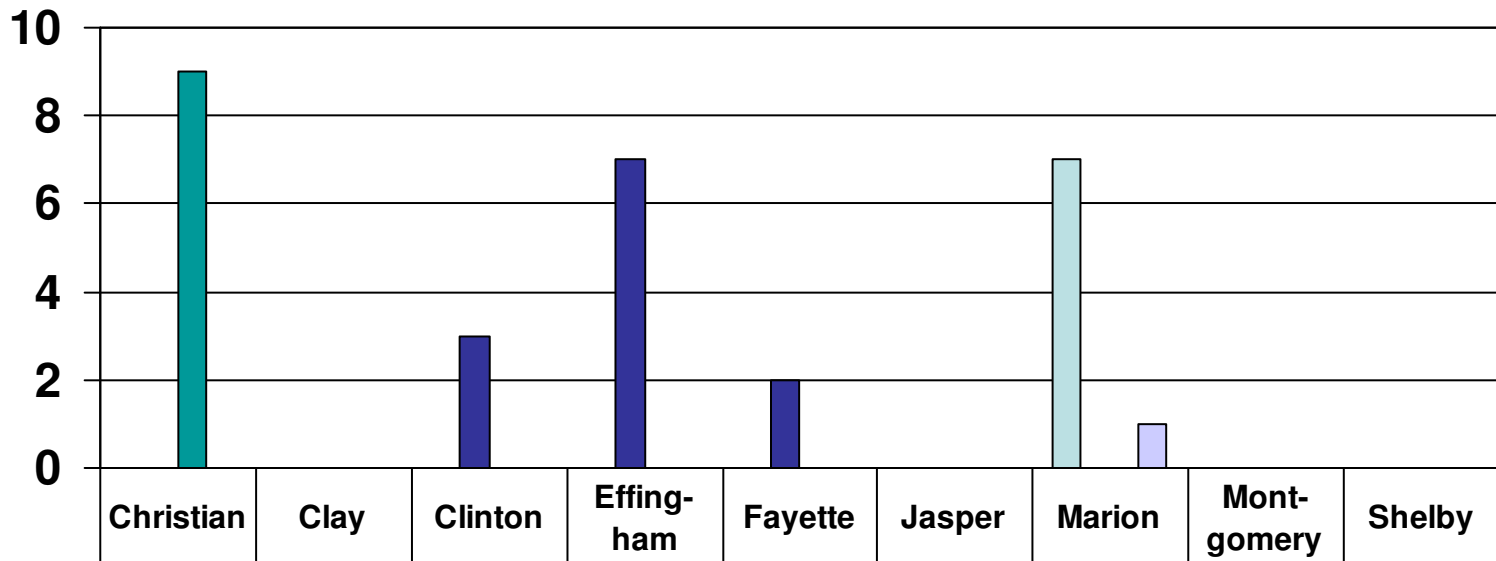
Detention Admissions by Gender First Quarter 2005-2008



Percentage Detention by Age First Quarter 2008

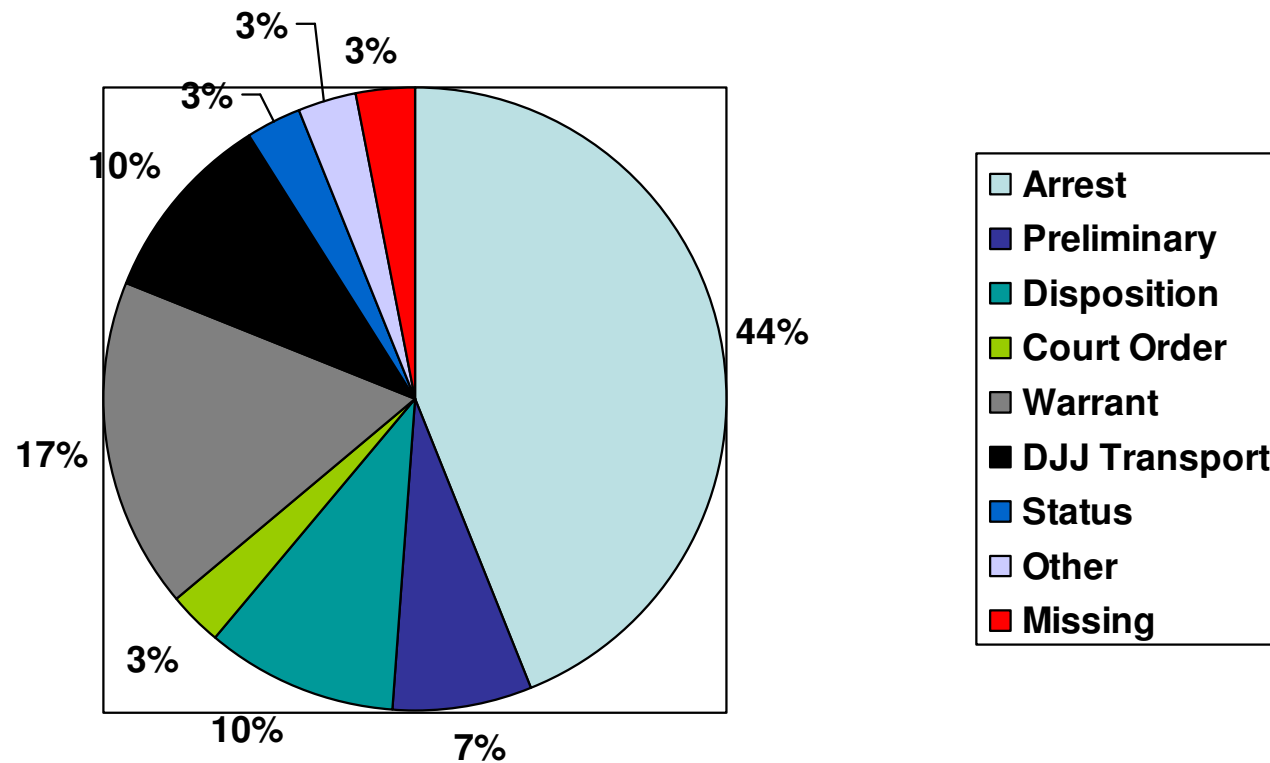


Number of Detention Admissions by County and Facility First Quarter 2008

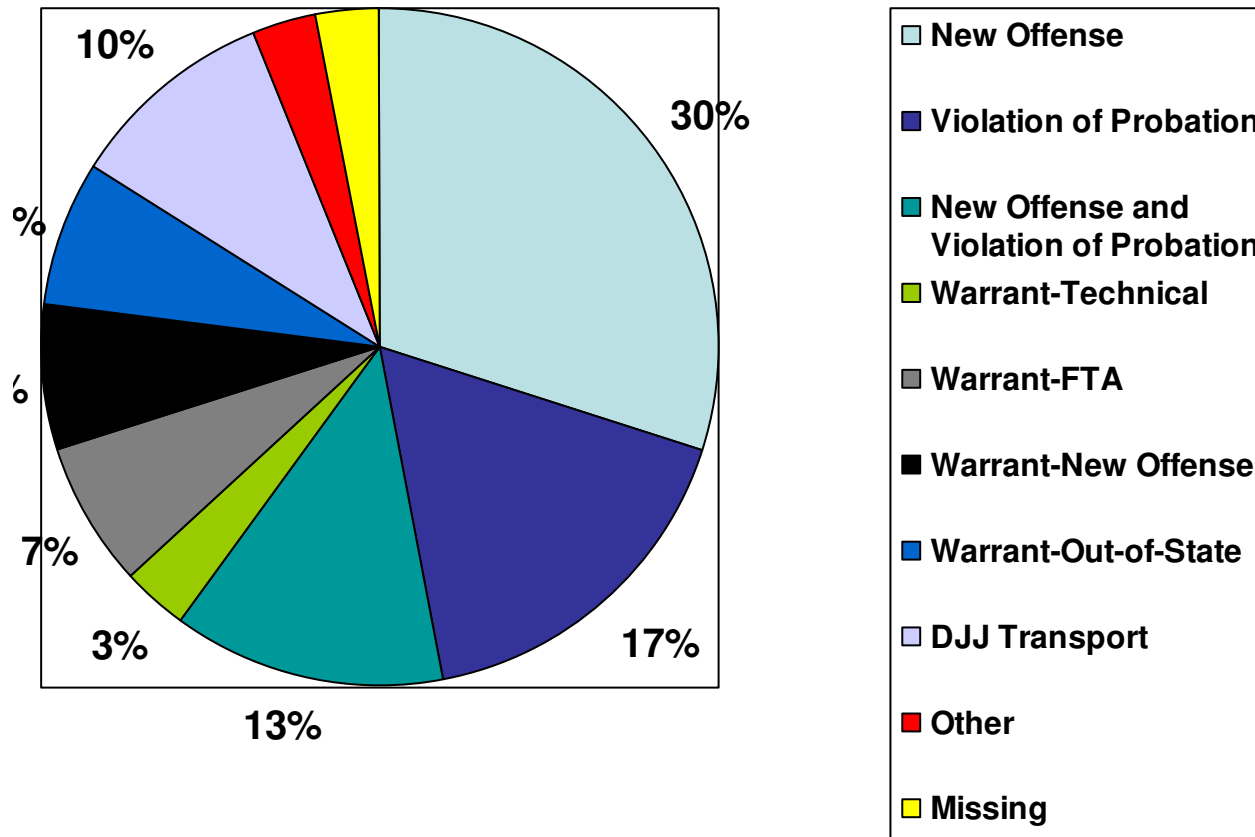


	Christian	Clay	Clinton	Effingham	Fayette	Jasper	Marion	Montgomery	Shelby
Franklin County	0	0	0	0	0	0	7	0	0
Madison County	0	0	3	7	2	0	0	0	0
Sangamon County	9	0	0	0	0	0	0	0	0
St. Clair County	0	0	0	0	0	0	1	0	0

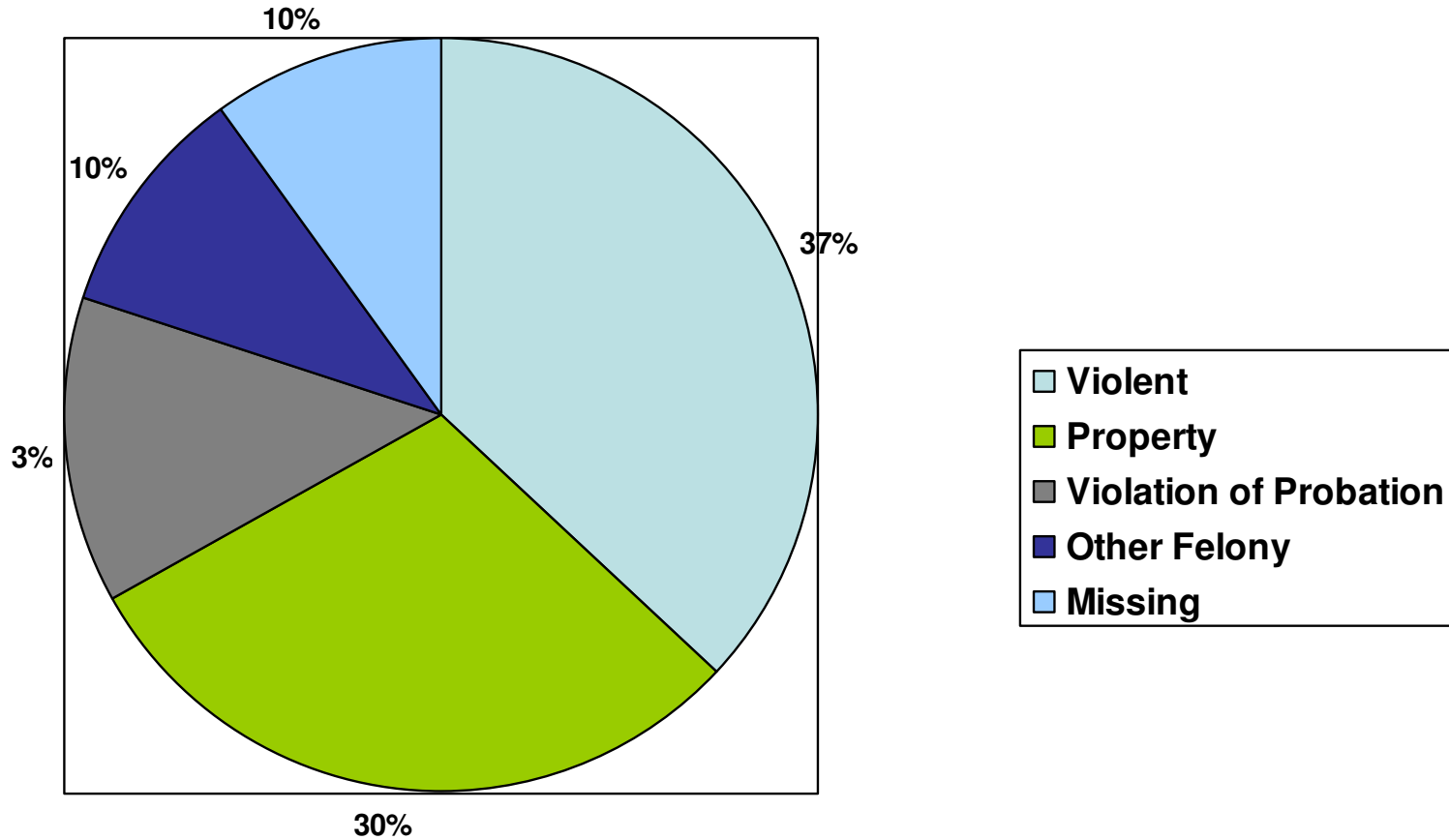
Percentage Detained by Point in Processing Detention Admissions Occurred First Quarter 2008



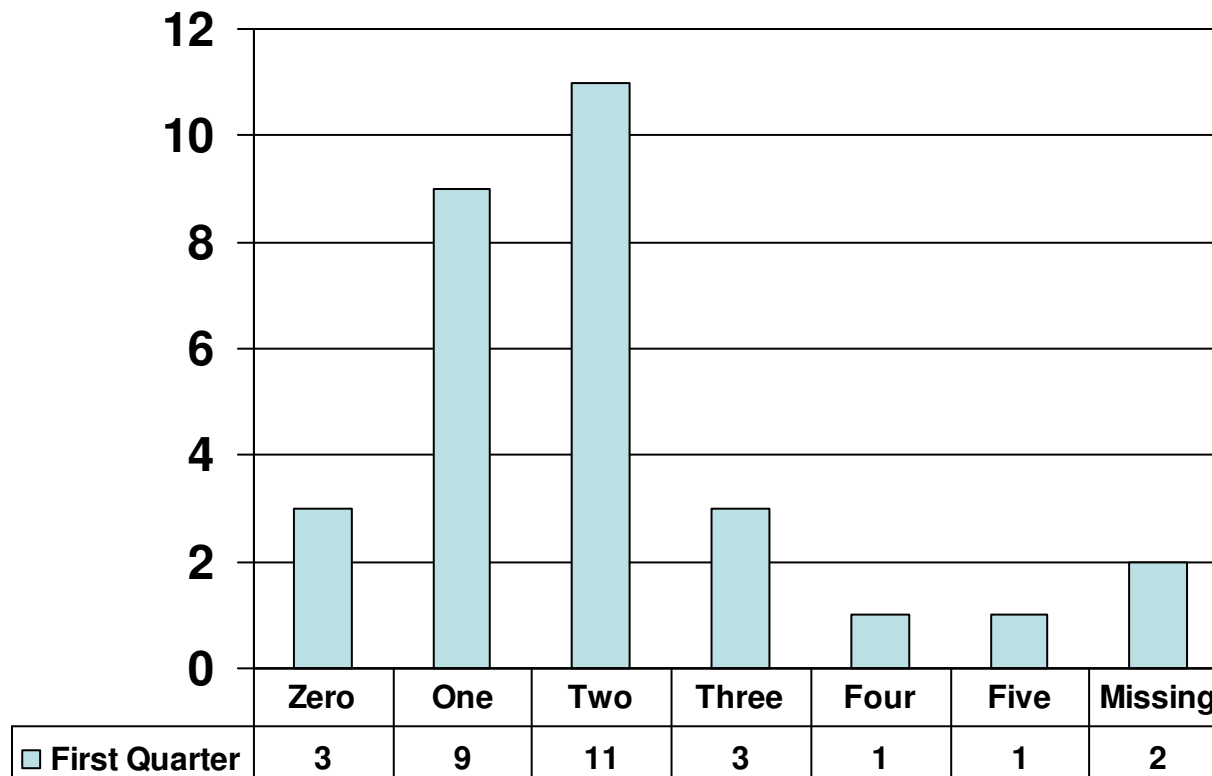
Percentage Detained by Reason for Detention Admission First Quarter 2008



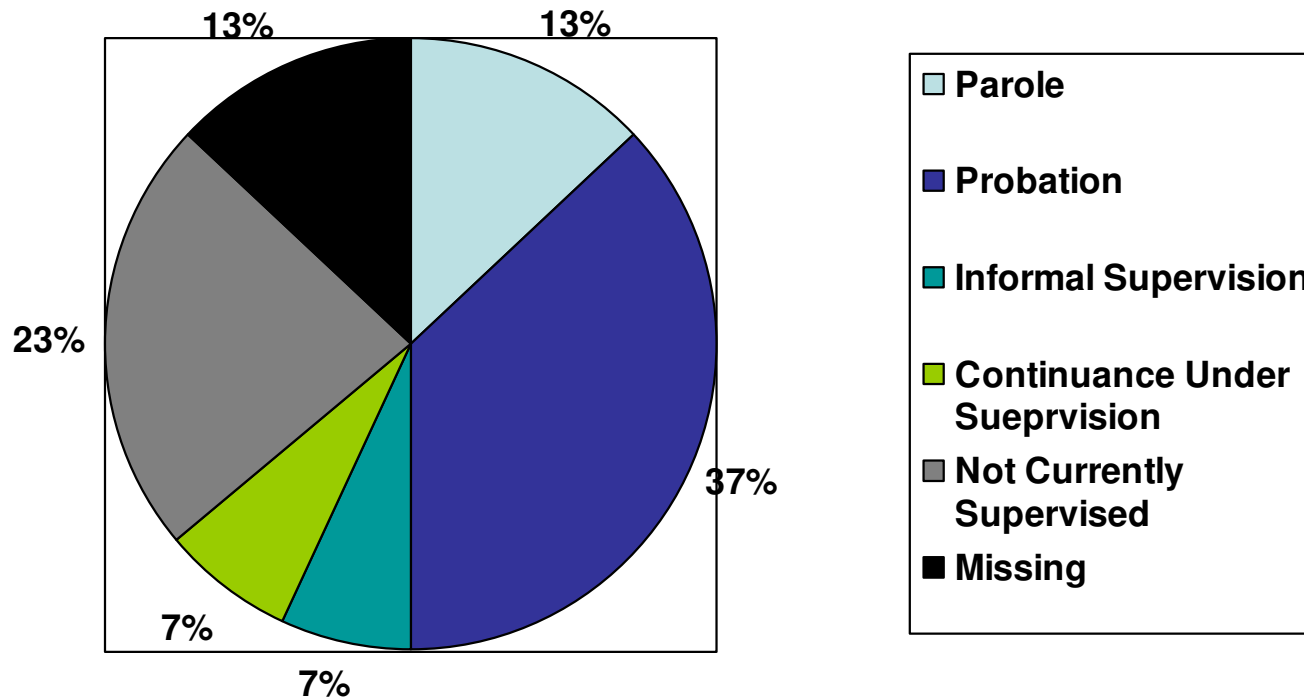
Percentage Detained by Most Serious Offense Type First Quarter 2008



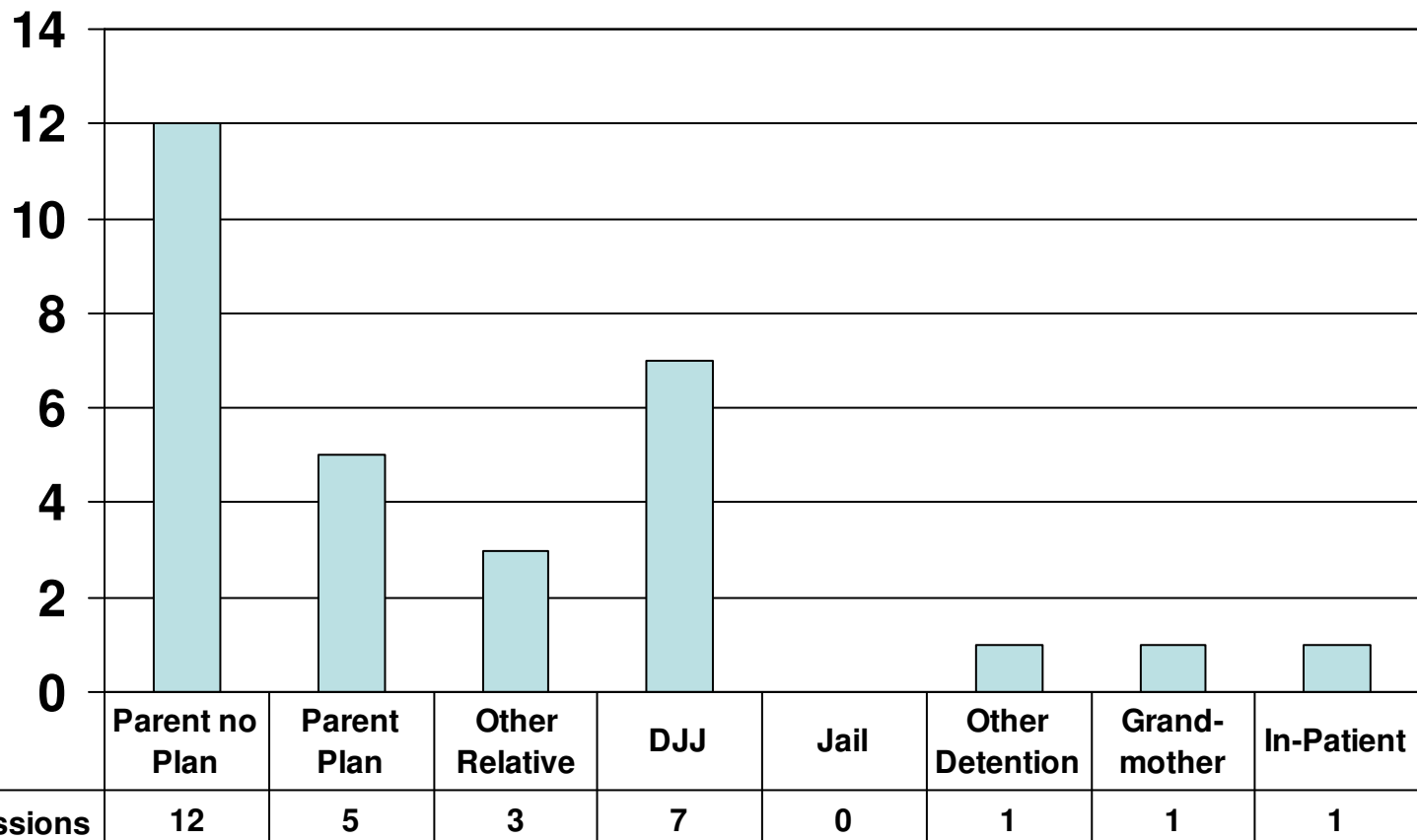
Number of Detention Admissions by Previous Number of Times Detained First Quarter 2008



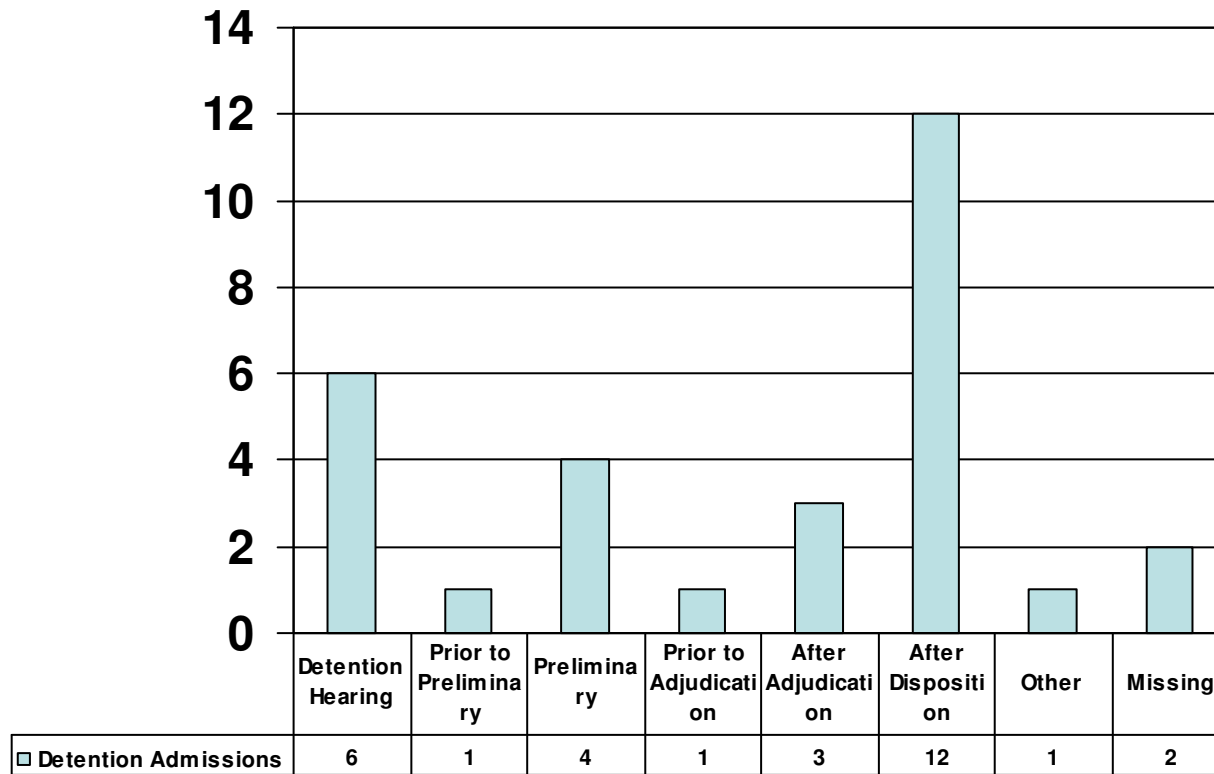
Percentage Detained by Supervision Status at Time of Admission First Quarter 2008



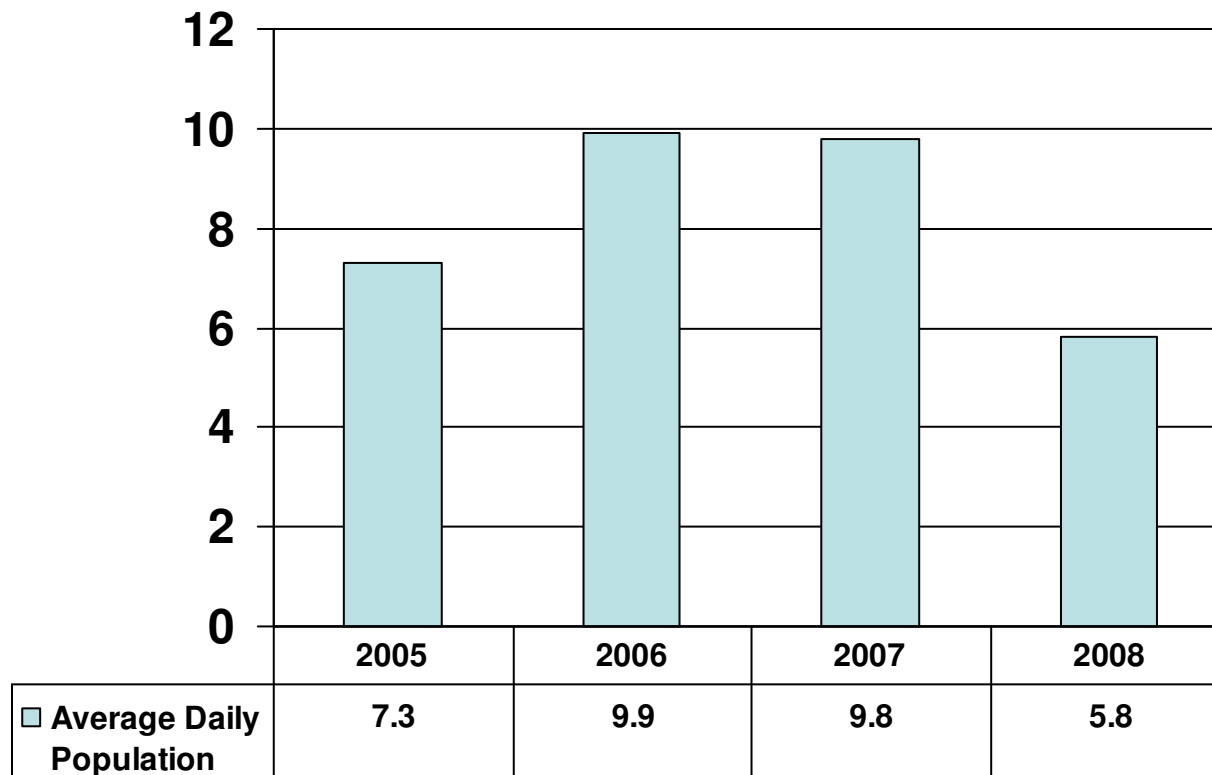
Number of Detention Admissions by Person/Facility Released First Quarter 2008



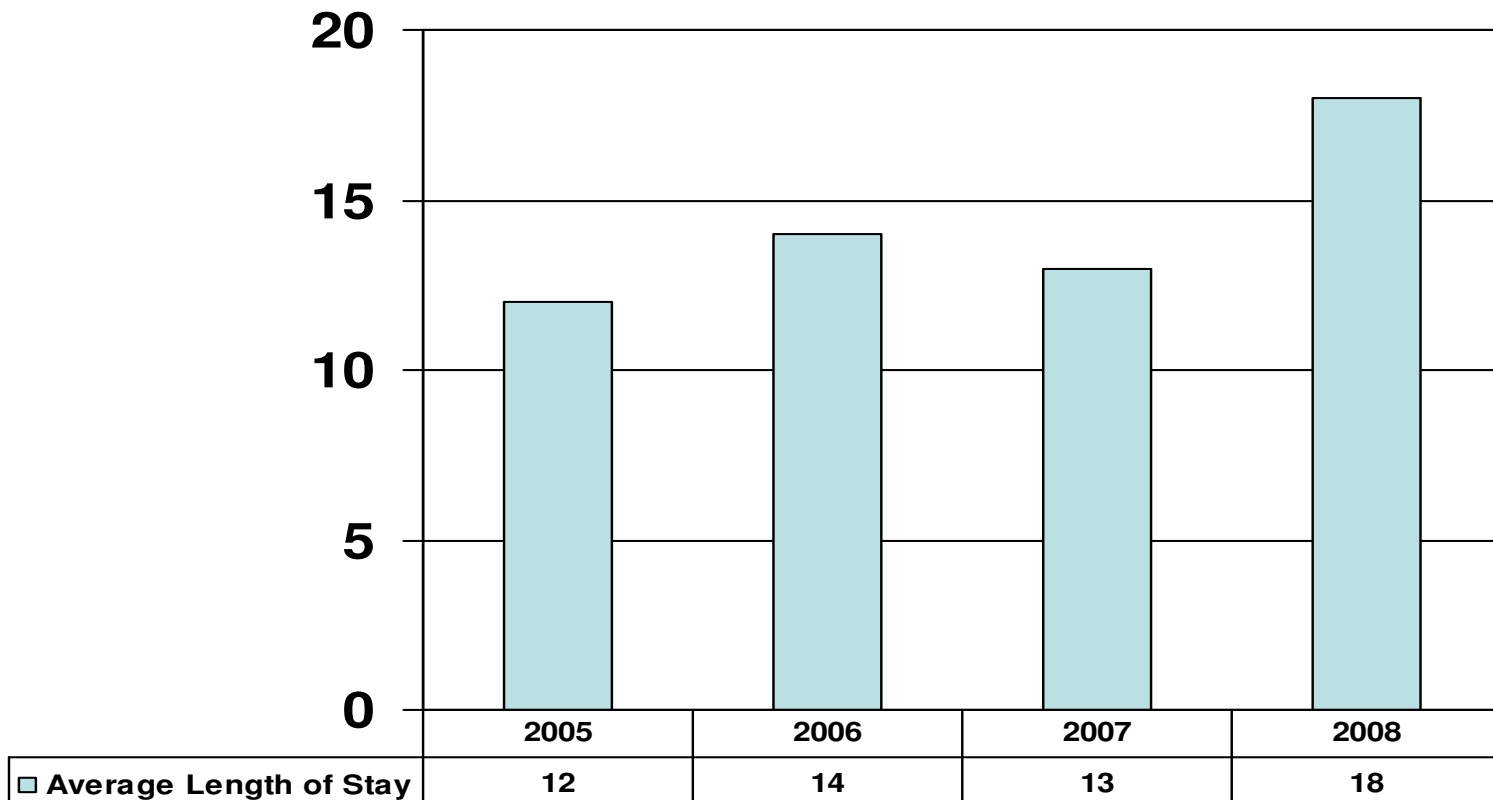
Number of Detention Admissions by Point Release Occurred First Quarter 2008



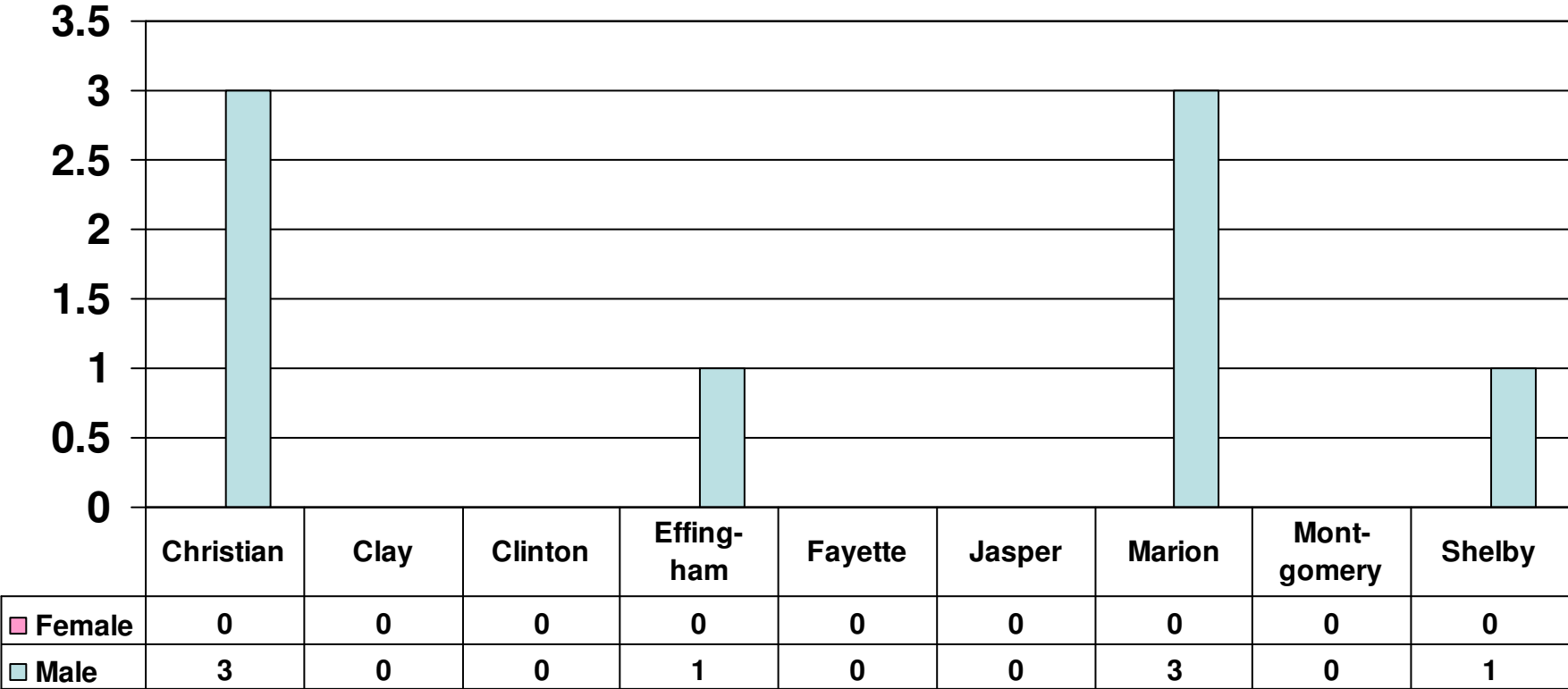
Average Daily Population First Quarter 2005-2008



Average Length of Stay First Quarter 2005-2008



Number of Department of Juvenile Justice Admissions by County and Gender First Quarter 2008



Number of Department of Juvenile Justice Admissions by Admission Type First Quarter 2008

