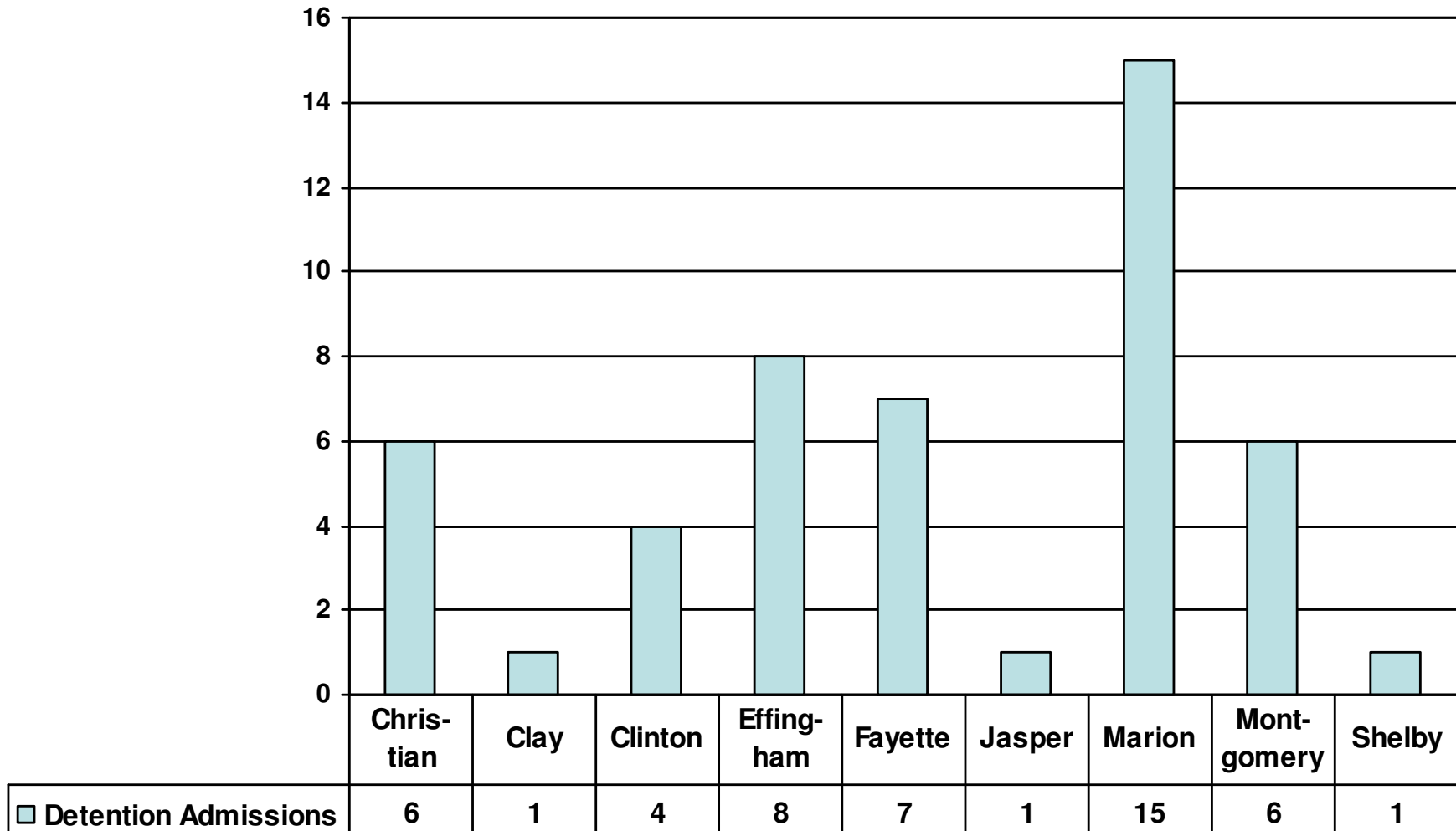


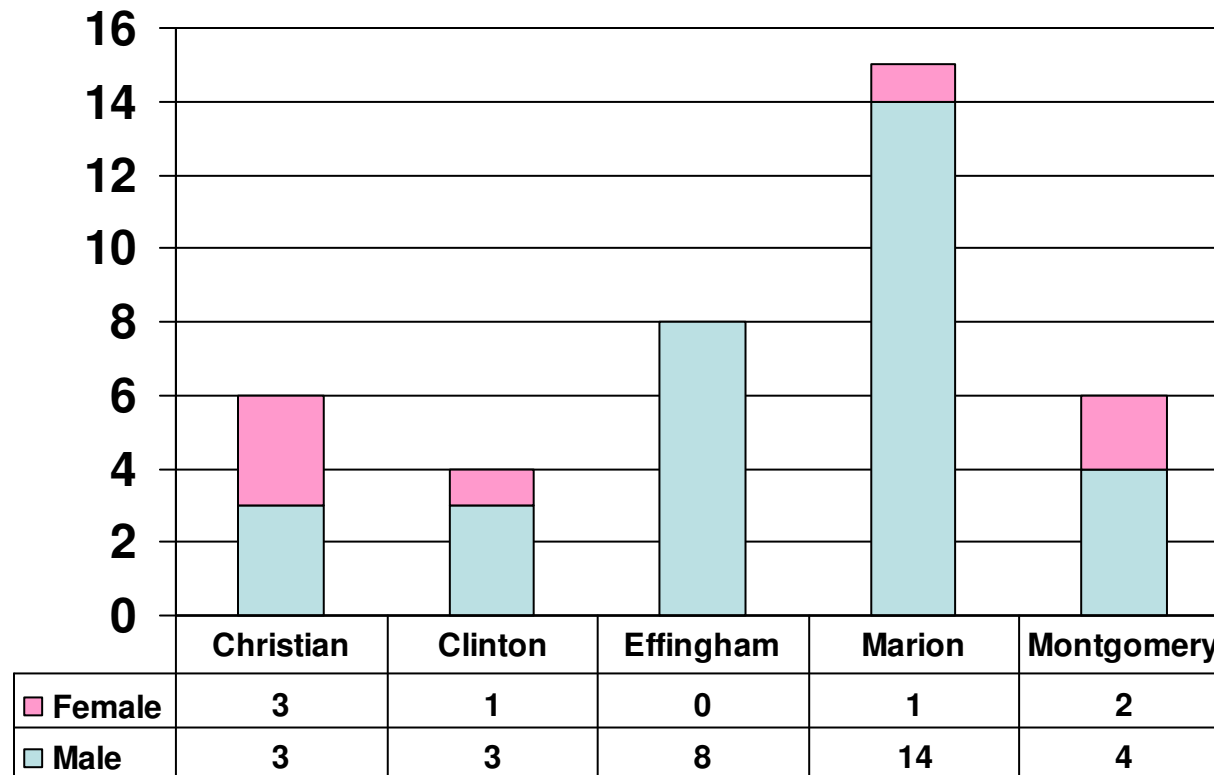
Fourth Judicial Circuit
Juvenile Detention and
Department of Juvenile Justice
Admissions

Data Report
Second Quarter 2008

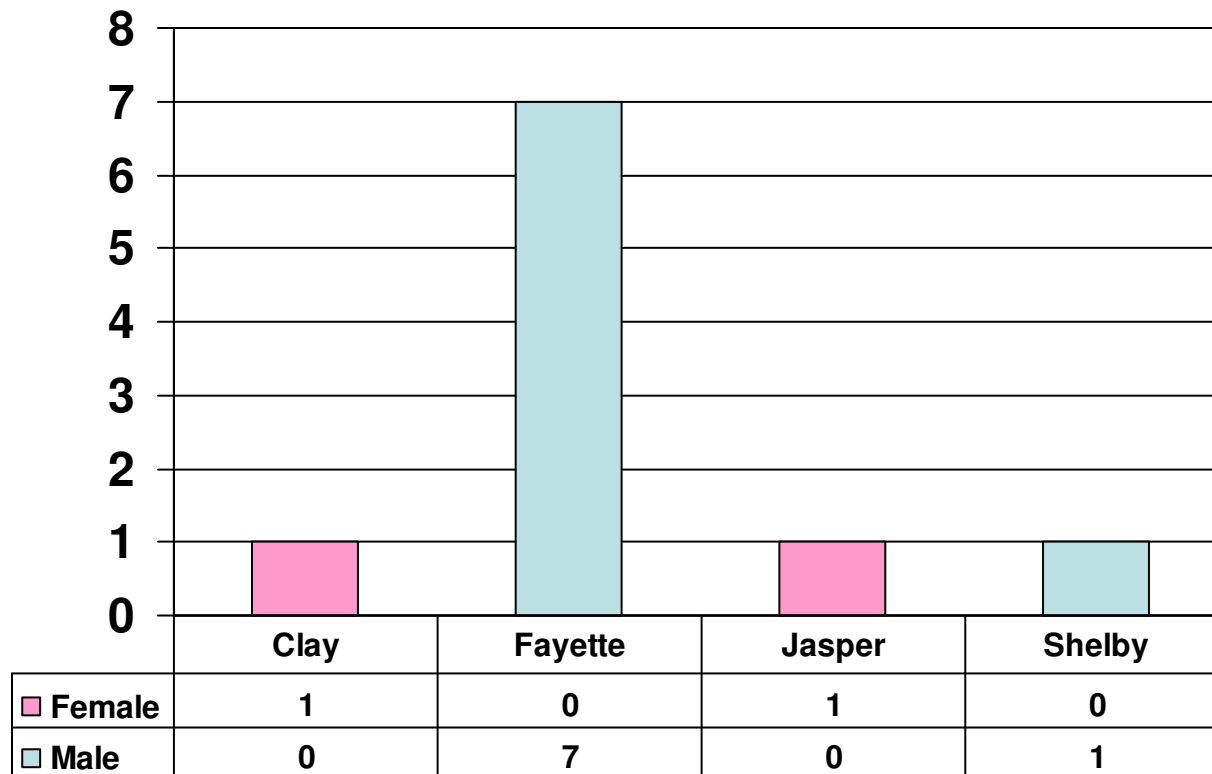
Detention Admissions by County Second Quarter 2008



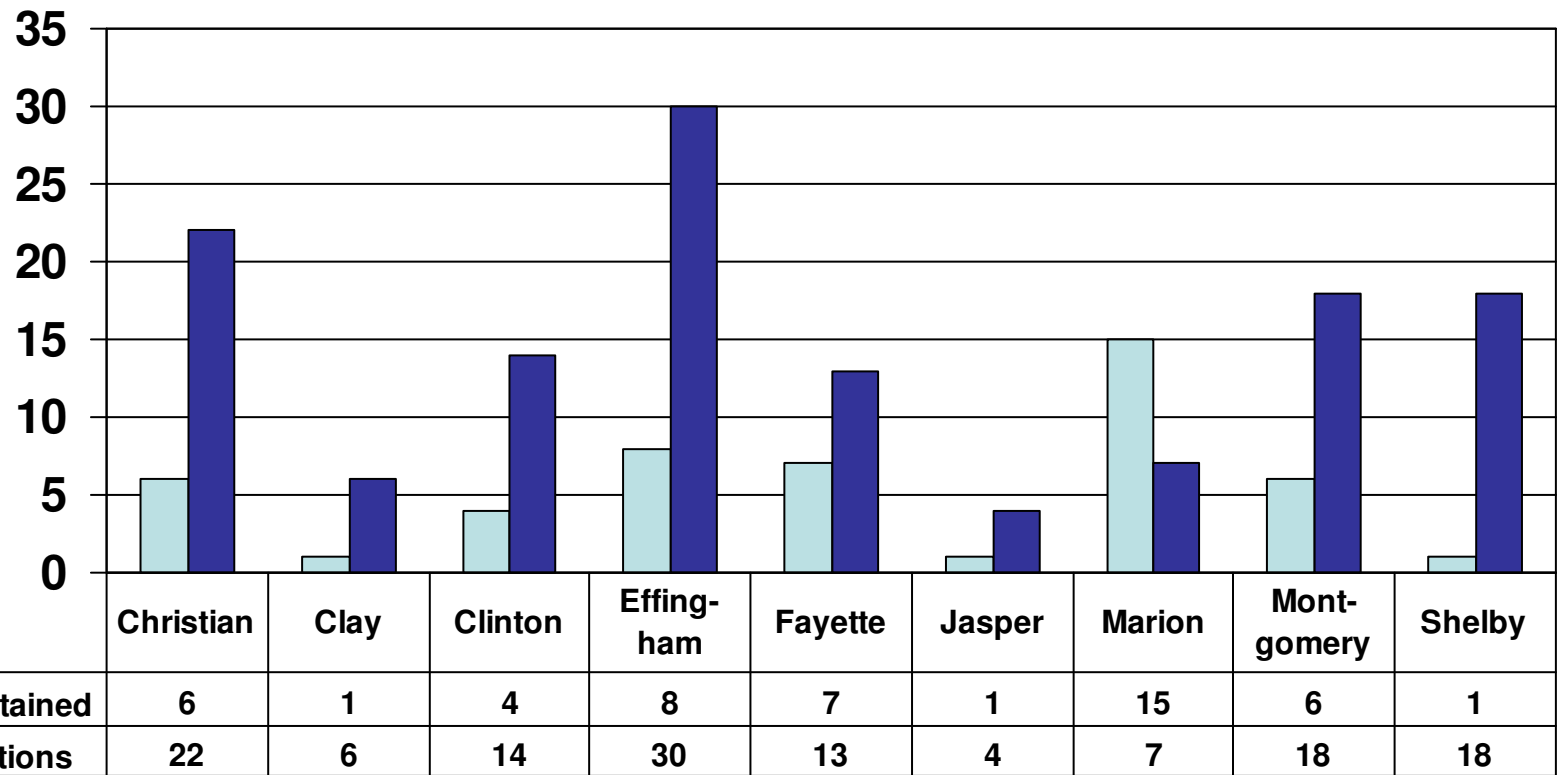
Detention Admissions by Gender (Population > 30,000) Second Quarter 2008



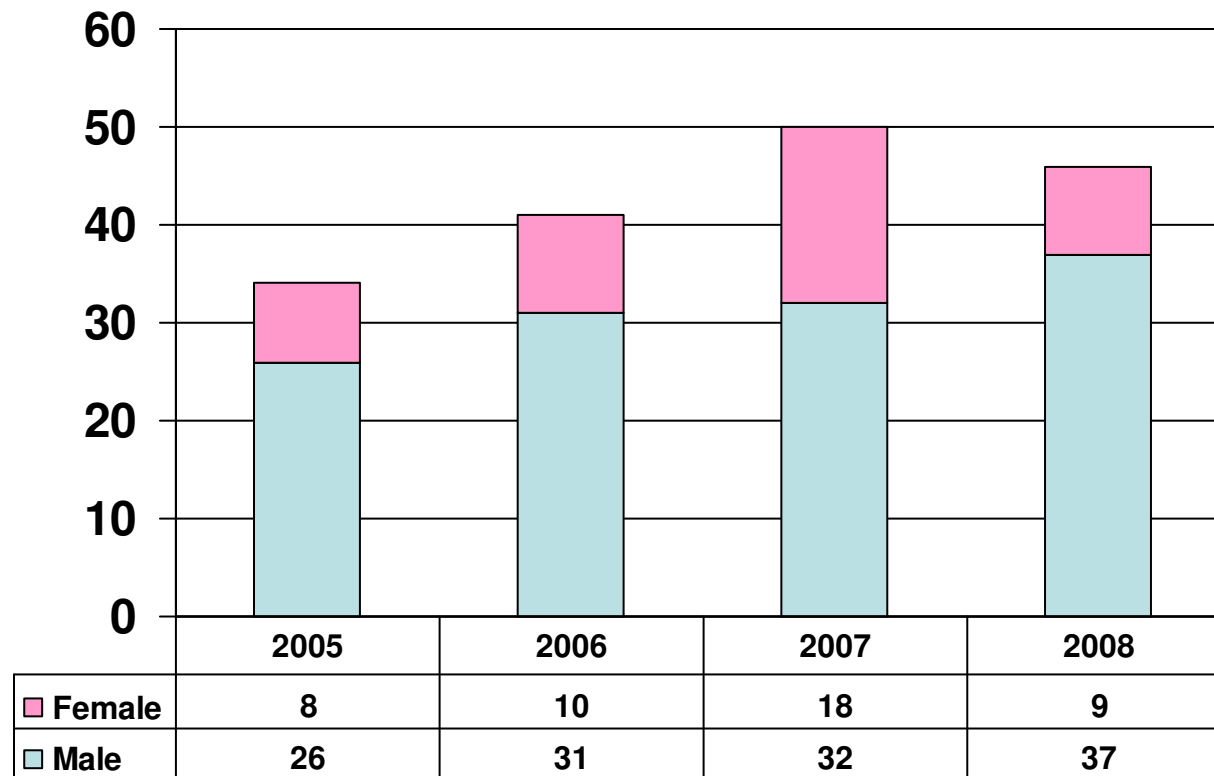
Detention Admissions by Gender (Population < 30,000) Second Quarter 2008



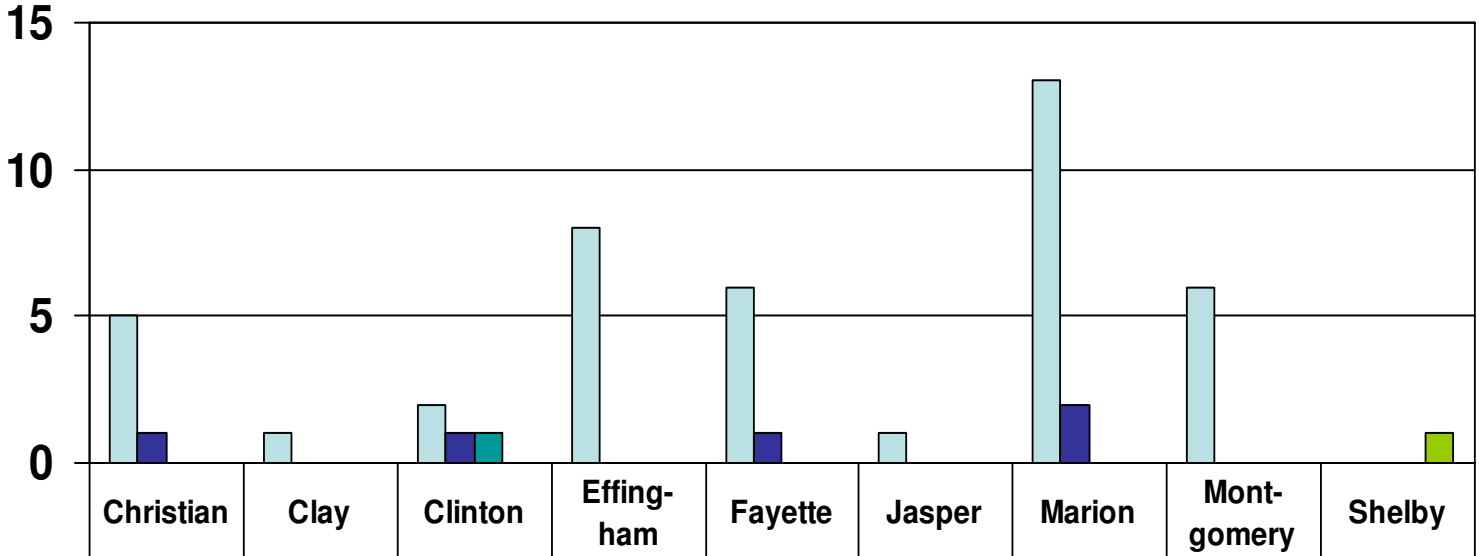
Number of Detention Admissions and Delinquency Petitions Filed by County Second Quarter 2008



Detention Admissions by Gender Second Quarter 2005-2008

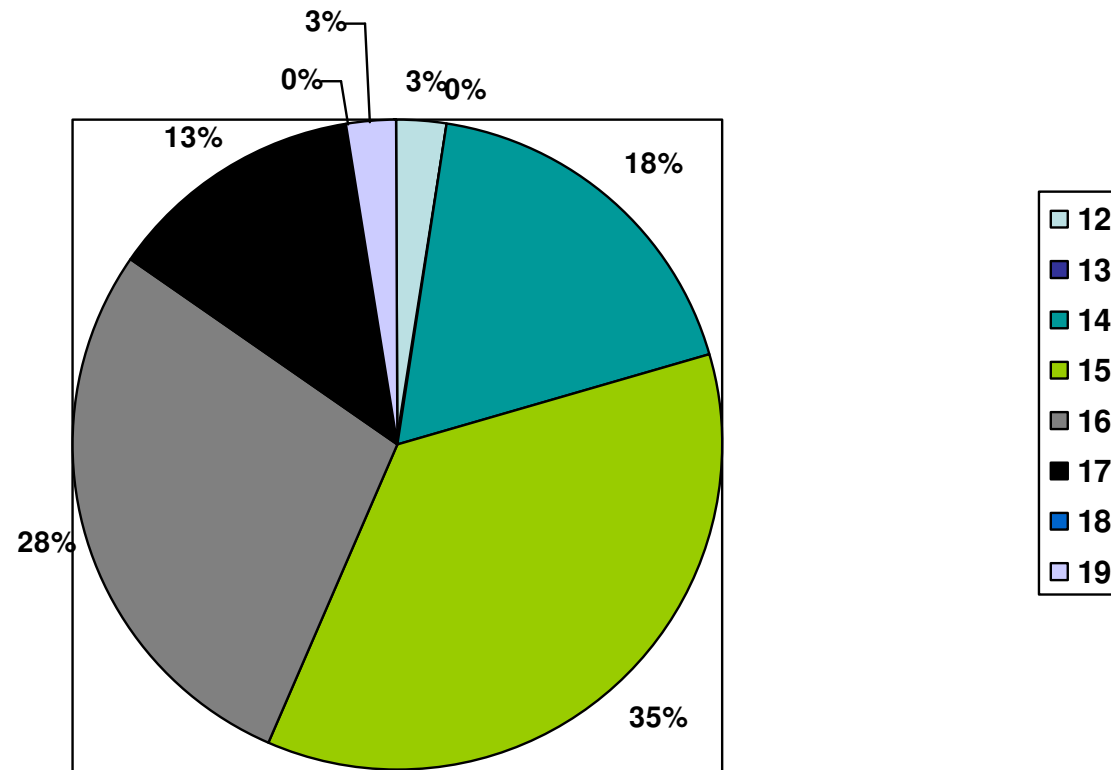


Number of Detention Admissions by Race Second Quarter 2008

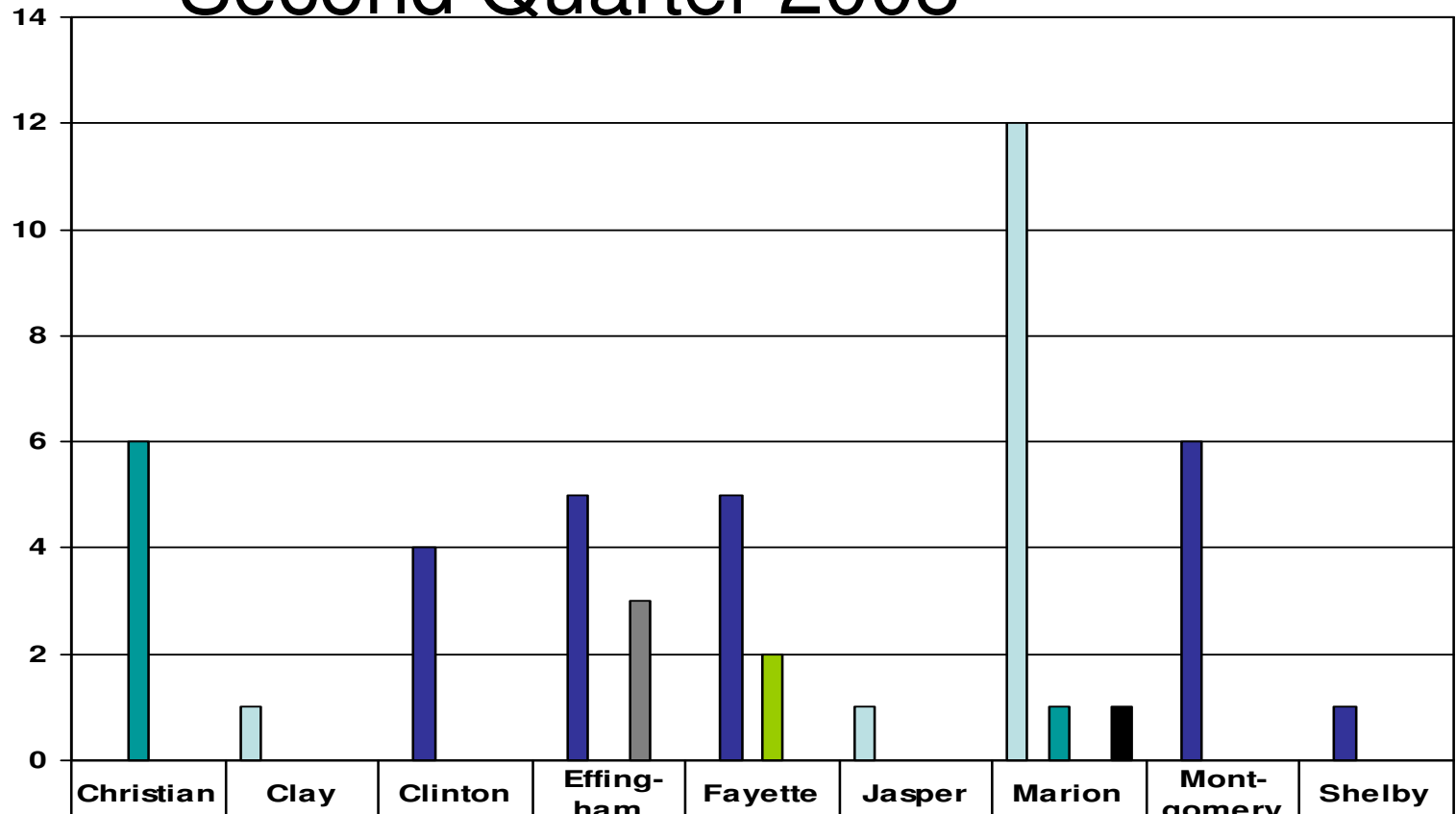


	Christian	Clay	Clinton	Effingham	Fayette	Jasper	Marion	Montgomery	Shelby
█ Caucasian	5	1	2	8	6	1	13	6	0
█ African American	1	0	1	0	1	0	2	0	0
█ Other	0	0	1	0	0	0	0	0	0
█ Missing	0	0	0	0	0	0	0	0	1

Percentage Detained by Age Second Quarter 2008

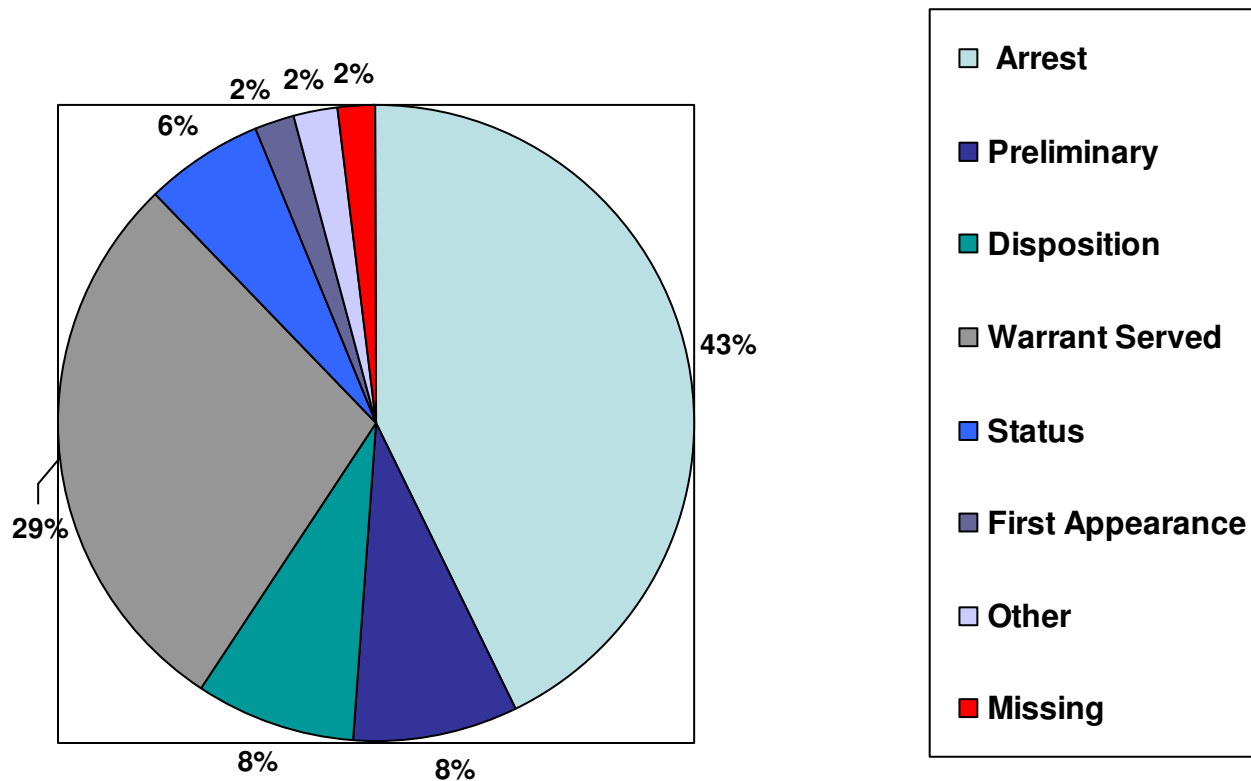


Number of Detention Admissions by County and Facility Second Quarter 2008

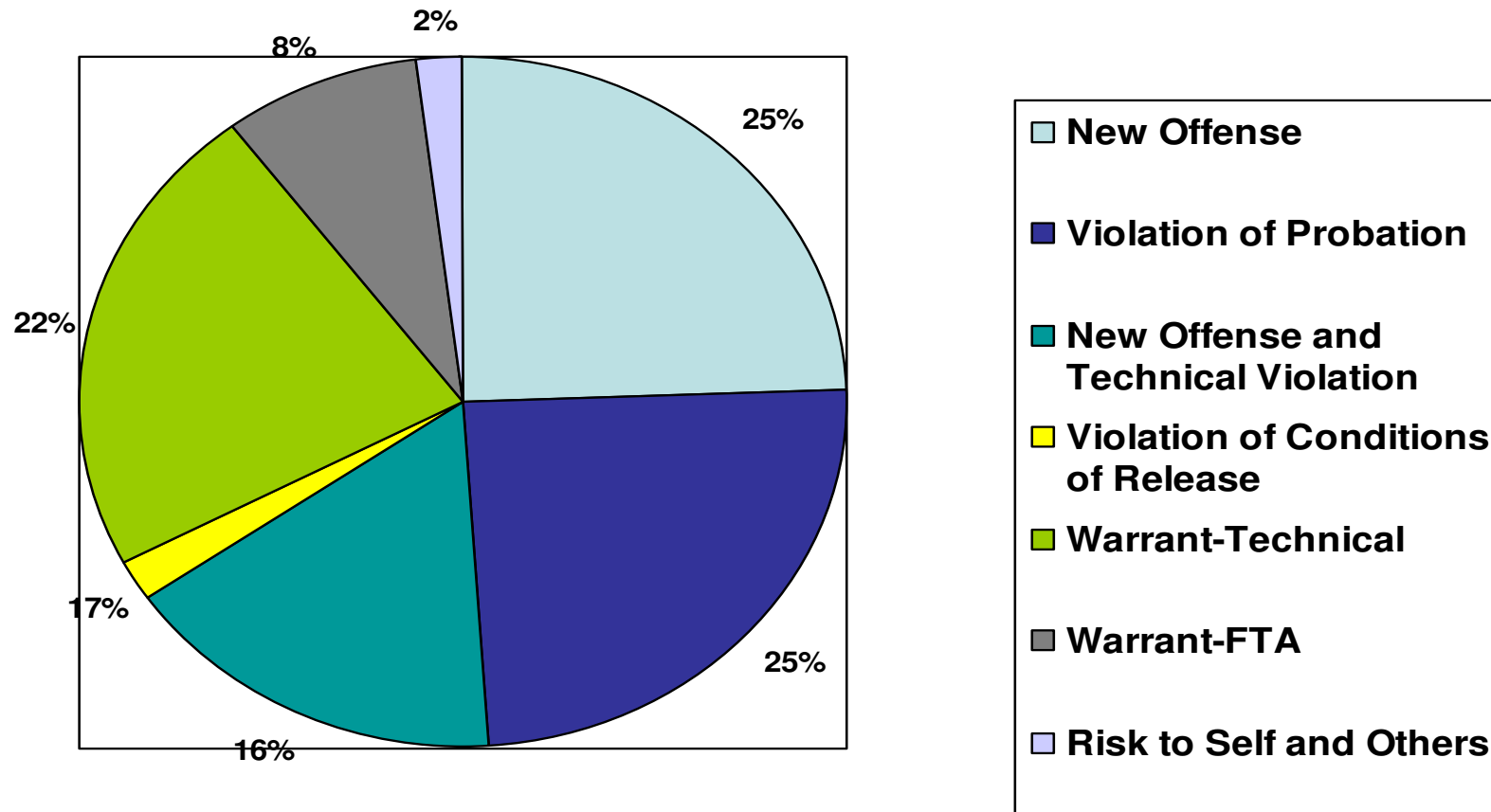


Franklin County	0	1	0	0	0	1	12	0	0
Madison County	0	0	4	5	5	0	0	6	1
Sangamon County	6	0	0	0	0	0	1	0	0
Fayette County Jail	0	0	0	0	2	0	0	0	0
Jasper County Jail	0	0	0	3	0	0	0	0	0
Marion County Jail	0	0	0	0	0	0	1	0	0

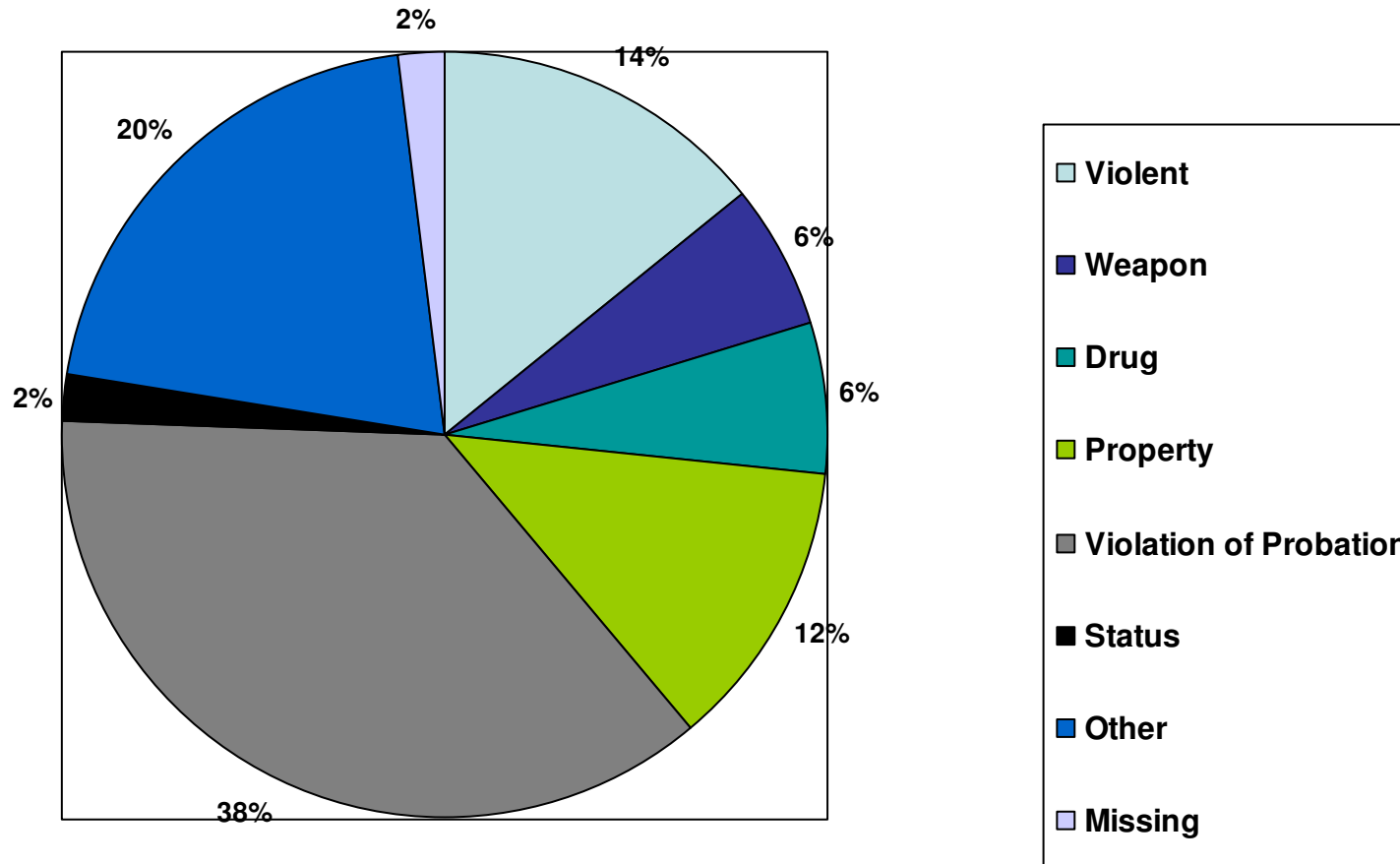
Percentage Detained by Point in Processing Detention Admissions Occurred Second Quarter 2008



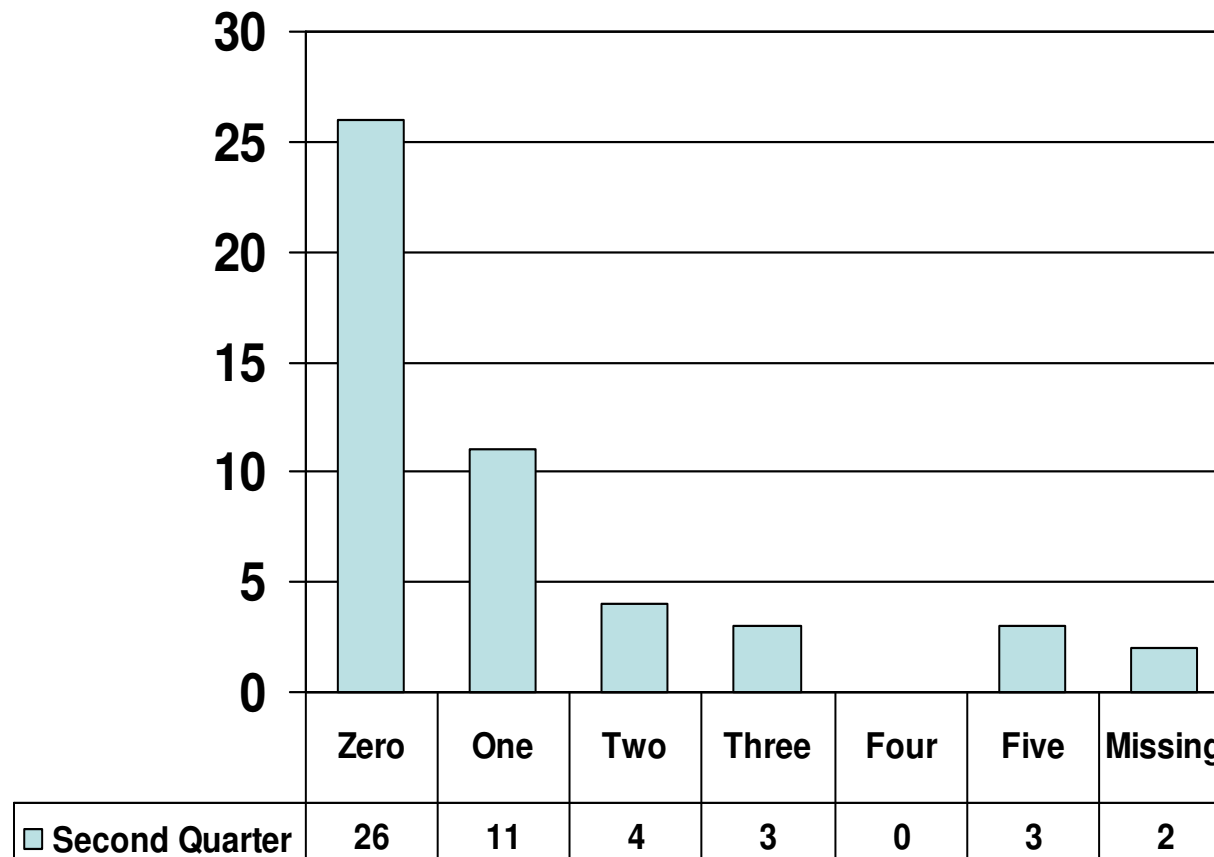
Percentage Detained by Reason for Detention Admission Second Quarter 2008



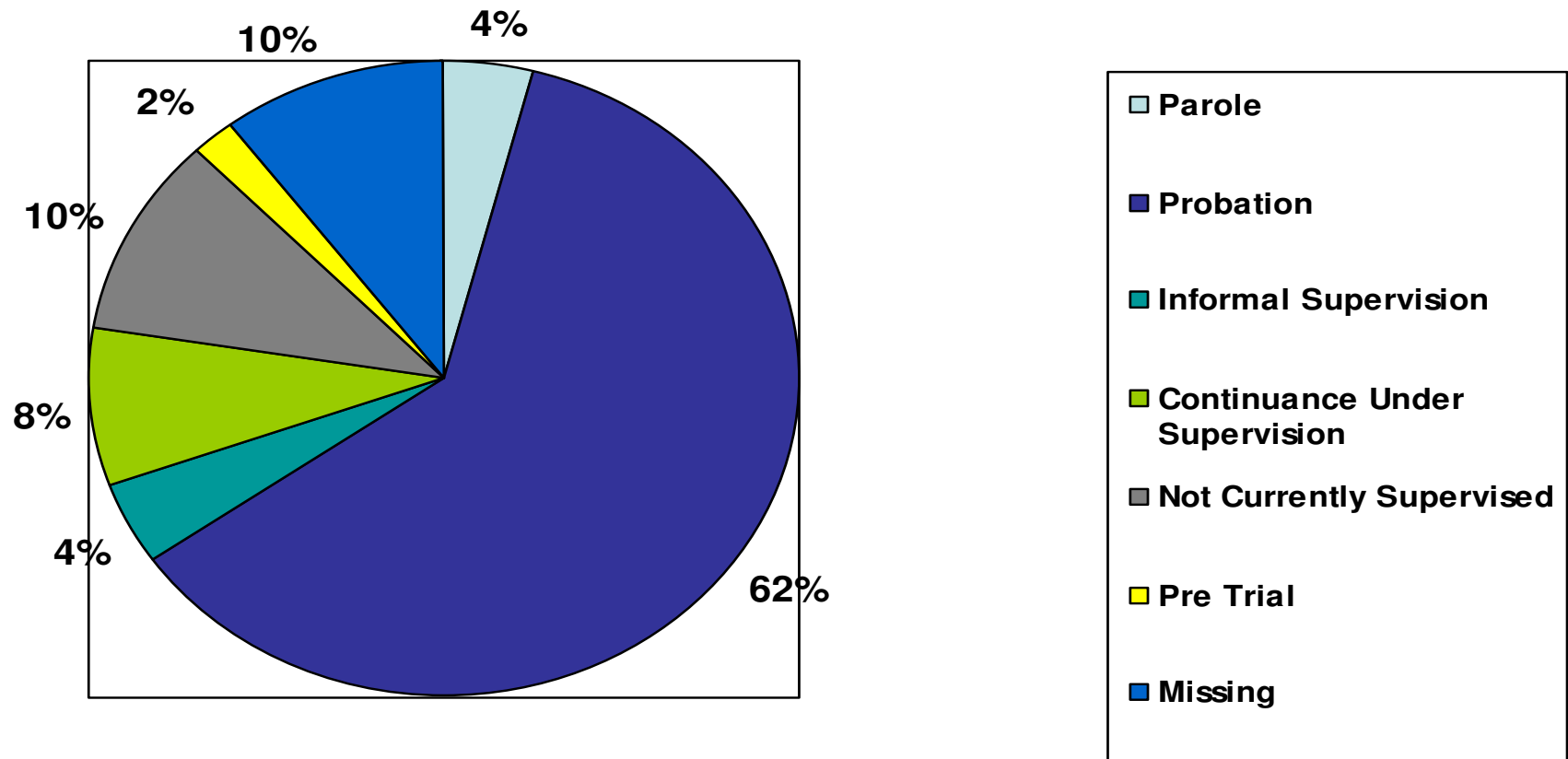
Percentage Detained by Most Serious Offense Type Second Quarter 2008



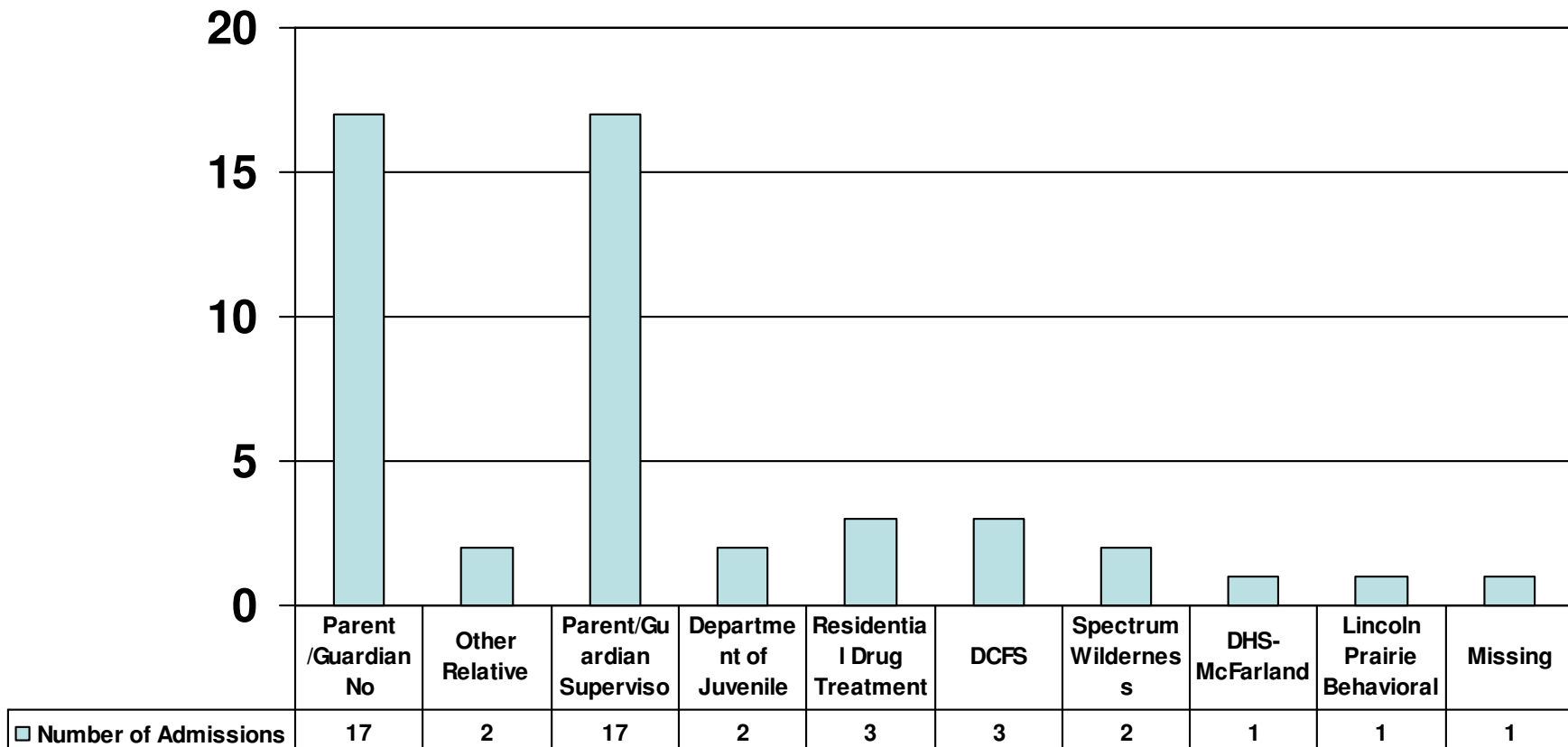
Number of Detention Admissions by Previous Number of Times Detained Second Quarter 2008



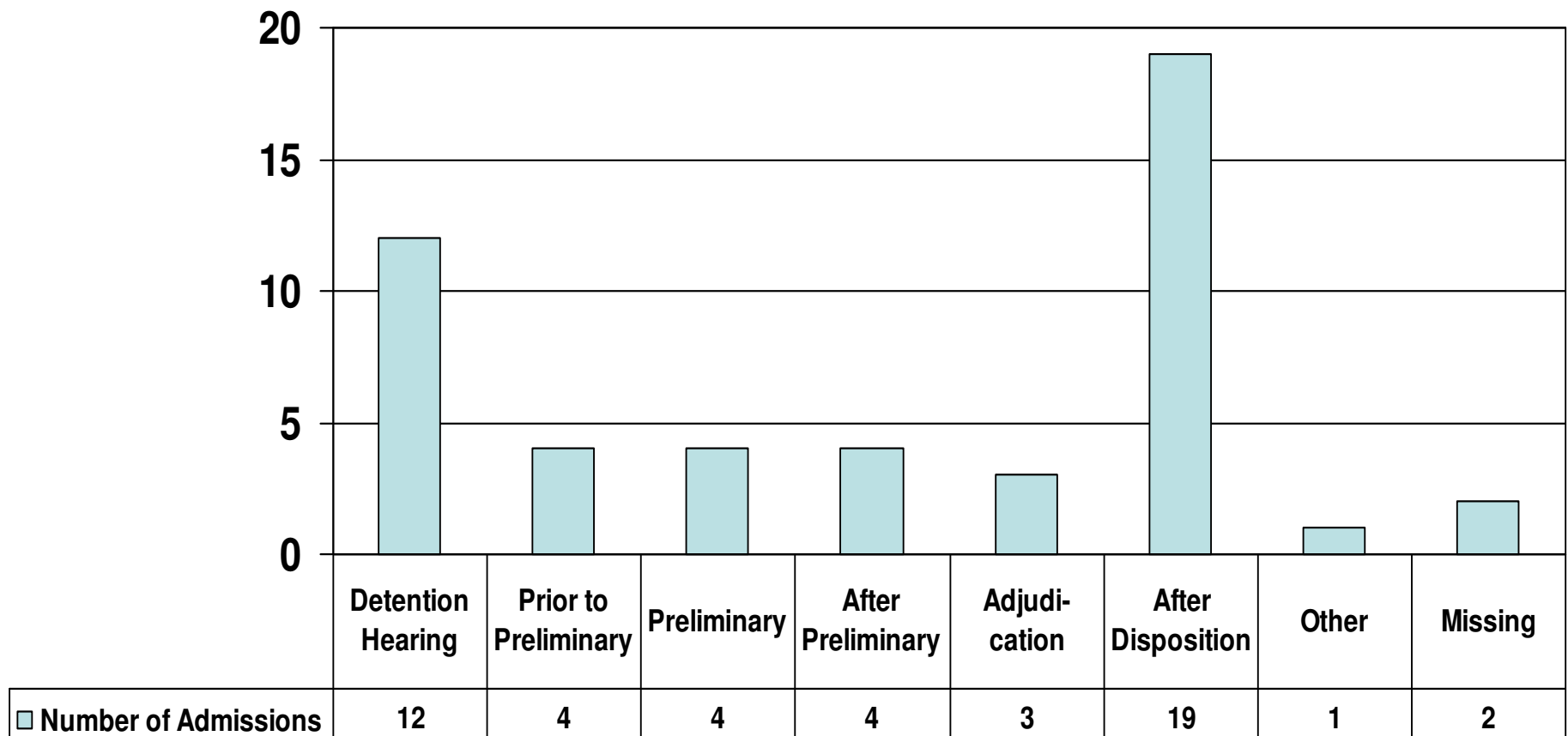
Percentage Detained by Supervision Status at Time of Admission Second Quarter 2008



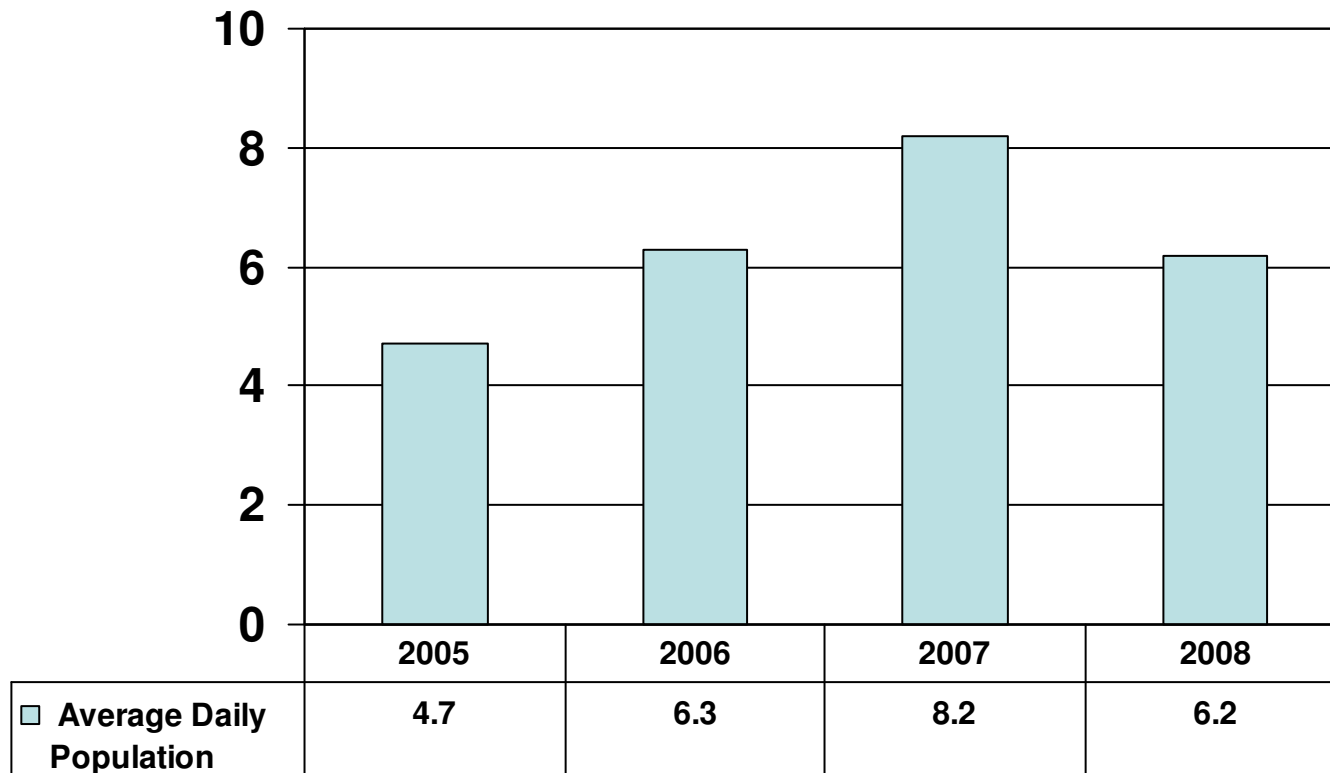
Number of Detention Admissions by Person/Facility Released Second Quarter 2008



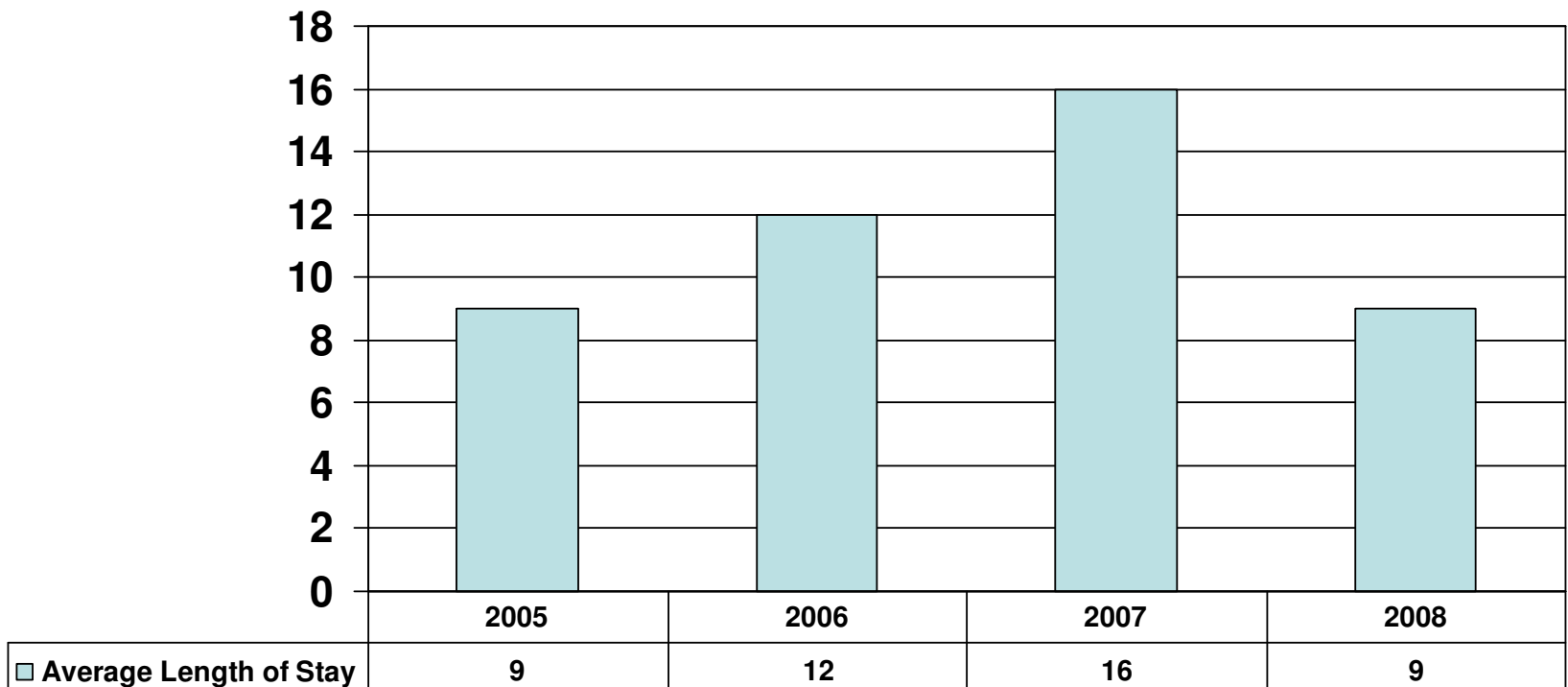
Number of Detention Admissions by Point Release Occurred Second Quarter 2008



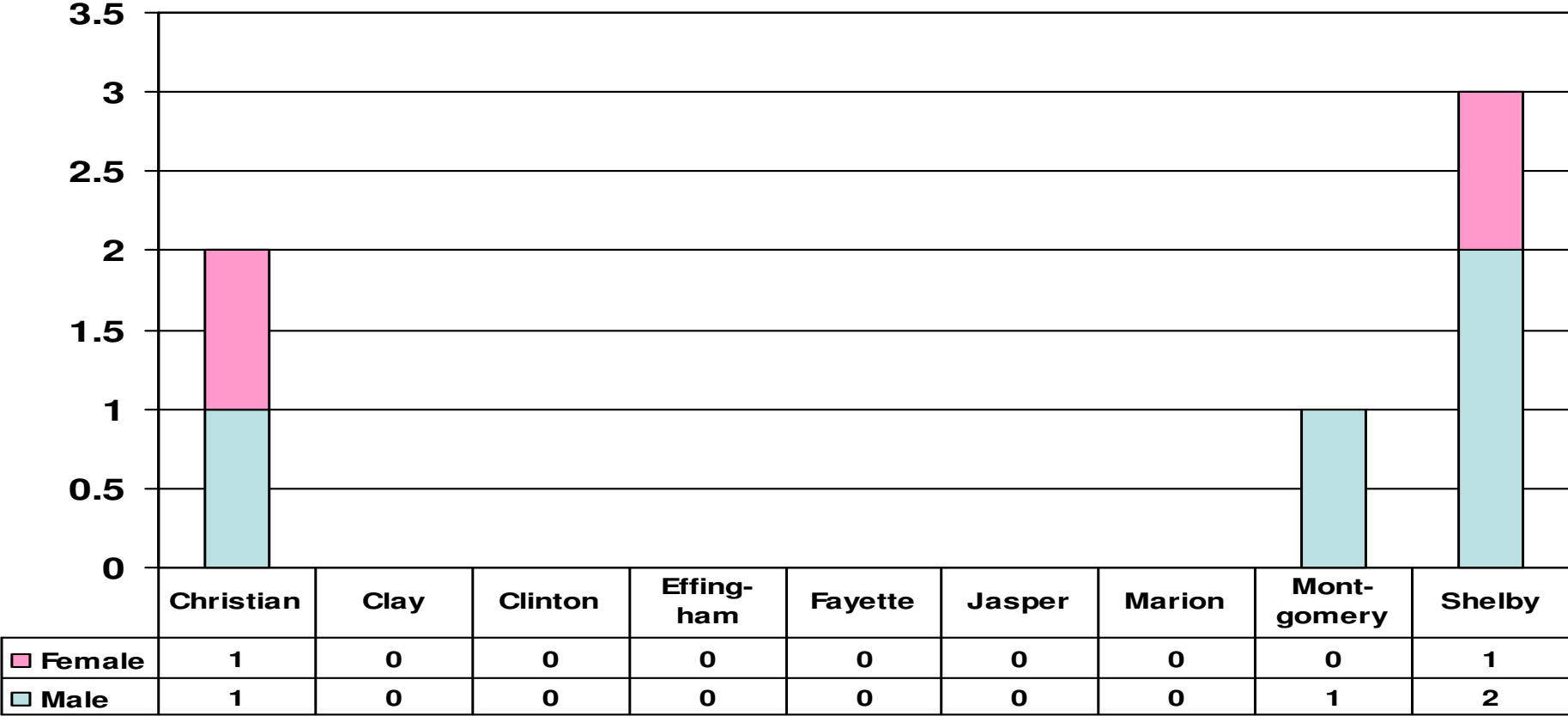
Average Daily Population Second Quarter 2008



Average Length of Stay Second Quarter 2005-2008



Number of Department of Juvenile Justice Admissions by County and Gender Second Quarter 2008



Number of Department of Juvenile Justice Admissions by Admission Type Second Quarter 2008

